

For Research Use Only

Anti-Human CD16b Rabbit Recombinant Antibody, PBS Only

Catalog Number: 98192-1-PBS



Basic Information

Catalog Number:

98192-1-PBS

Size:

1mg, 2 mg/ml

Source:

Rabbit

Isotype:

IgG

GenBank Accession Number:

GeneID (NCBI):

2215

Full Name:

Fc fragment of IgG, low affinity IIIb, receptor (CD16b)

Purification Method:

Protein A purification

CloneNo.:

241713E3

Applications

Tested Applications:

FC

Species Specificity:

human

Background Information

CD16 is a low affinity Fc receptor. It has been identified as Fc receptors Fc γ RIIIa (CD16a) and Fc γ RIIIb (CD16b), encoded by two nearly identical genes, FCGR3A and FCGR3B. In humans, Fc γ RIIIa/CD16a is a type I transmembrane receptor expressed on macrophages and NK cells. Fc γ RIIIb/CD16b is a GPI-linked Fc-receptor highly expressed on neutrophils. The two proteins differ by only four amino acid residues in the mature proteins (PMID: 30361439).

Storage

Storage:

Store at -80°C.

The product is shipped with ice packs. Upon receipt, store it immediately at -80°C

Storage Buffer:

PBS Only

For technical support and original validation data for this product please contact:

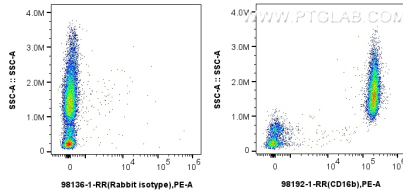
T: 4006900926

E: Proteintech-CN@ptglab.com

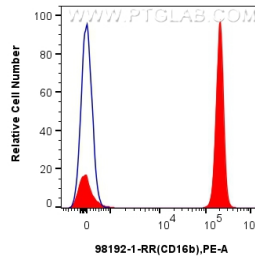
W: ptgcn.com

This product is exclusively available under Proteintech Group brand and is not available to purchase from any other manufacturer.

Selected Validation Data



1x10⁶ human peripheral blood leukocytes were surface stained with 0.25 ug Anti-Human CD16b Rabbit Recombinant Antibody (98192-1-RR, Clone:241713E3) or Rabbit IgG Isotype Control Recombinant Antibody (98136-1-RR, Clone: 240953C9) and PE-conjugated Goat Anti-Rabbit IgG. Cells were not fixed. This data was developed using the same antibody clone with 98192-1-PBS in a different storage buffer formulation.



1x10⁶ human peripheral blood leukocytes were surface stained with 0.25 ug Anti-Human CD16b Rabbit Recombinant Antibody (98192-1-RR, Clone:241713E3) (red) or Rabbit IgG Isotype Control Recombinant Antibody (98136-1-RR, Clone:240953C9) (blue), and PE-conjugated Goat Anti-Rabbit IgG. Cells were not fixed. This data was developed using the same antibody clone with 98192-1-PBS in a different storage buffer formulation.