

For Research Use Only

# Anti-Human DDR1/CD167a Rabbit Recombinant Antibody, PBS Only

Catalog Number: 98200-1-PBS



## Basic Information

<b>Catalog Number:</b> 98200-1-PBS	<b>GenBank Accession Number:</b> NM_001297654.2	<b>Purification Method:</b> Protein A purification
<b>Concentration:</b> 1mg, 2 mg/ml	<b>GeneID (NCBI):</b> 780	<b>CloneNo.:</b> 241796D6
<b>Source:</b> Rabbit	<b>UNIPROT ID:</b> Q08345-1	
<b>Isotype:</b> IgG	<b>Full Name:</b> discoidin domain receptor tyrosine kinase 1	
	<b>Calculated MW:</b> 101kDa	

## Applications

**Tested Applications:**  
FC

**Species Specificity:**  
human

## Background Information

DDR1, or CD167a, is a member of the receptor tyrosine kinase (RTK) family, which plays a significant role in various cellular processes including cell proliferation, adhesion, migration, and extracellular matrix (ECM) remodeling. DDR1 is known for its unique discoidin domain that allows it to bind specifically to certain collagens, initiating downstream signaling pathways that can lead to cell transformation and tumor progression. Abnormal activation of DDR1 is closely associated with the development of various solid tumors, and it has been shown that DDR1 can prevent immune cells from infiltrating triple-negative breast cancer (TNBC) and eliminate tumor cells.

## Storage

**Storage:**  
Store at -80°C.  
**The product is shipped with ice packs. Upon receipt, store it immediately at -80°C**

**Storage Buffer:**  
PBS Only

For technical support and original validation data for this product please contact:

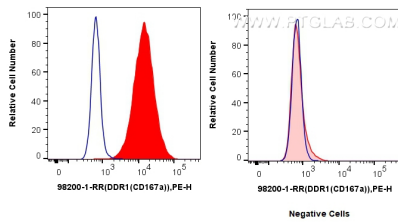
T: 4006900926

E: [Proteintech-CN@ptglab.com](mailto:Proteintech-CN@ptglab.com)

W: [ptgcn.com](http://ptgcn.com)

**This product is exclusively available under Proteintech Group brand and is not available to purchase from any other manufacturer.**

## Selected Validation Data



1x10<sup>6</sup> MCF-7 cells (left) or HeLa cells (right) were surface stained with 0.25 ug Anti-Human DDR1/CD167a Rabbit Recombinant Antibody (98200-1-RR, Clone: 241796D6) (red) or Rabbit IgG Isotype Control Recombinant Antibody (98136-1-RR, Clone: 240953C9) (blue), and PE-Conjugated Goat Anti-Rabbit IgG(H+L). Cells were not fixed. This data was developed using the same antibody clone with 98200-1-PBS in a different storage buffer formulation.