

For Research Use Only

# Anti-Human DC-SIGNR/CD299 Rabbit Recombinant Antibody

Catalog Number: 98205-1-RR



## Basic Information

<b>Catalog Number:</b> 98205-1-RR	<b>GenBank Accession Number:</b> BC038851	<b>Purification Method:</b> Protein A purification
<b>Size:</b> 100ug, 1000 ug/ml	<b>GeneID (NCBI):</b> 10332	<b>CloneNo.:</b> 241683G8
<b>Source:</b> Rabbit	<b>UNIPROT ID:</b> Q9H2X3	
<b>Isotype:</b> IgG	<b>Full Name:</b> C-type lectin domain family 4, member M	
	<b>Calculated MW:</b> 45 kDa	

## Applications

**Tested Applications:**  
FC

**Species Specificity:**  
human

## Background Information

Dendritic cell-specific intracellular adhesion molecule-3-grabbing non-integrin (DC-SIGN/CD209) and DC-SIGN related (DC-SIGNR/CD299/L-SIGN/CD209L/CLEC4M) are trans-membrane C-type lectins that are calcium-dependent carbohydrate-binding proteins, which can act as cell-adhesion and pathogen-recognition receptors (PMID: 18458800). DC-SIGN and DC-SIGNR share 77% amino acid identity (PMID: 10975799; 11226297). DC-SIGN is expressed on subsets of dendritic cells and macrophages while DC-SIGNR is restricted to endothelial cells of the liver, lymph nodes and placenta (PMID: 17509452). DC-SIGNR serves as a receptor for ICAM-3. It recognizes a wide range of evolutionarily divergent pathogens.

## Storage

**Storage:**  
Store at 2 - 8°C. Stable for one year after shipment.

**Storage Buffer:**  
PBS with 0.09% sodium azide, pH 7.3.

For technical support and original validation data for this product please contact:

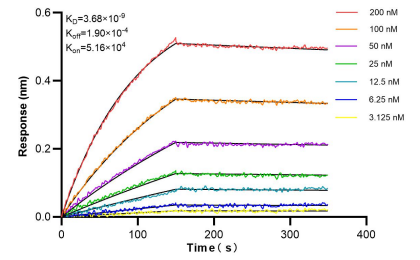
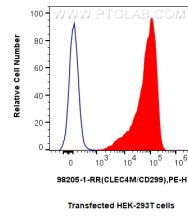
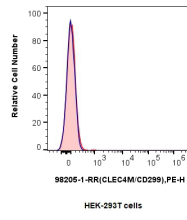
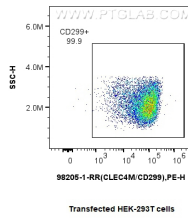
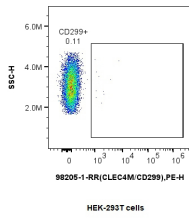
T: 4006900926

E: Proteintech-CN@ptglab.com

W: ptgcn.com

**This product is exclusively available under Proteintech Group brand and is not available to purchase from any other manufacturer.**

## Selected Validation Data



1x10<sup>6</sup> HEK-293T cells or DC-SIGNR/CD299 transfected HEK-293T cells were surface stained with 0.25 ug Anti-Human DC-SIGNR/CD299 Rabbit Recombinant Antibody (98205-1-RR, Clone: 241683G8) and PE-Conjugated Goat Anti-Rabbit IgG(H+L). Cells were not fixed.

1x10<sup>6</sup> HEK-293T cells or DC-SIGNR/CD299 transfected HEK-293T cells were surface stained with 0.25 ug Anti-Human DC-SIGNR/CD299 Rabbit Recombinant Antibody (98205-1-RR, Clone:241683G8) or Rabbit IgG Isotype Control Recombinant Antibody (98136-1-RR, Clone: 240953C9) (blue) and PE-Conjugated Goat Anti-Rabbit IgG(H+L). Cells were not fixed.

Bi-layer interferometry (BLI) kinetic assays of 98205-1-RR against Human DC-SIGNR/CD299 were performed. The affinity constant is 3.68 nM.