

For Research Use Only

# Anti-Human IL-13R $\alpha$ 1/CD213a1 Rabbit Recombinant Antibody, PBS Only

Catalog Number:98216-1-PBS



## Basic Information

Catalog Number:

98216-1-PBS

Size:

1mg, 2 mg/ml

Source:

Rabbit

Isotype:

IgG

GenBank Accession Number:

BC009960

GeneID (NCBI):

3597

UNIPROT ID:

P78552

Full Name:

interleukin 13 receptor, alpha 1

Calculated MW:

49 kDa

Purification Method:

Protein A purification

CloneNo.:

241834A1

## Applications

Tested Applications:

FC

Species Specificity:

human

## Background Information

IL-13 is an immunoregulatory cytokine secreted predominantly by activated T-helper 2 (Th2) cells and performs multiple functions through a complex receptor system comprised of IL-4R $\alpha$  and two IL-13 binding proteins, IL-13R $\alpha$  1 and IL-13R $\alpha$  2 (PMID: 12704343). IL-13R $\alpha$  1 is a glycosylated transmembrane protein (PMID: 10856136; 9723655). IL-13R $\alpha$  1 is expressed on a wide range of cells including B cells, monocytes, macrophages, basophils, mast cells, and endothelial cells (PMID: 10856136; 31866859). IL-13 binding to the IL-4R $\alpha$  /IL-13R $\alpha$  1 complex leads to activation of JAK1, JAK2, and TYK2 and subsequent phosphorylation of STAT6 and STAT3 (PMID: 31866859).

## Storage

Storage:

Store at -80°C.

**The product is shipped with ice packs. Upon receipt, store it immediately at -80°C**

Storage Buffer:

PBS Only

For technical support and original validation data for this product please contact:

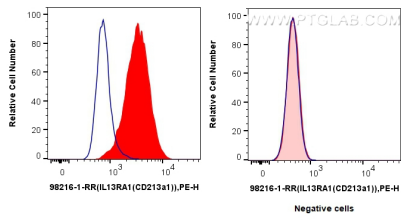
T: 4006900926

E: [Proteintech-CN@ptglab.com](mailto:Proteintech-CN@ptglab.com)

W: [ptgcn.com](http://ptgcn.com)

**This product is exclusively available under Proteintech Group brand and is not available to purchase from any other manufacturer.**

## Selected Validation Data



1x10<sup>6</sup> MCF-7 cells (left) or Jurkat cells (right) were surface stained with 0.125 ug Anti-Human IL-13Ra1/CD213a1 Rabbit Recombinant Antibody (98216-1-RR, Clone: 241834A1) (red) or Rabbit IgG Isotype Control Recombinant Antibody (98136-1-RR, Clone: 240953C9) (blue), and PE-Conjugated Goat Anti-Rabbit IgG(H+L). Cells were not fixed. This data was developed using the same antibody clone with 98216-1-PBS in a different storage buffer formulation.