

For Research Use Only

Anti-Human CCL20/MIP-3 alpha Rabbit Recombinant Antibody, PBS Only

Catalog Number: 98221-1-PBS



Basic Information

Catalog Number: 98221-1-PBS	GenBank Accession Number: NM_004591.3	Purification Method: Protein A purification
Size: 1mg, 2 mg/ml	GeneID (NCBI): 6364	CloneNo.: 241694B2
Source: Rabbit	UNIPROT ID: P78556-1	
Isotype: IgG	Full Name: chemokine (C-C motif) ligand 20	
	Calculated MW: 11kDa	

Applications

Tested Applications:
FC (Intra)

Species Specificity:
human

Background Information

CCL20, also known as macrophage infiltrating factor protein 3 α , is a C-C chemokine that specifically binds to the receptor CCR6. CCL20 is produced in various tissues and by a wide range of immune cells, including neutrophils, natural killer cells, T-helper type 17 (Th17) cells, B cells, and various antigen-presenting cells, such as dendritic cells (DCs), Langerhans cells, and macrophages. Increased expression of CCL20 is likely involved in the increased recruitment of dendritic cells observed in fibroinflammatory diseases such as chronic obstructive pulmonary disease (COPD). CCL20 expression is increased by the proinflammatory cytokine IL-1 beta.

Storage

Storage:
Store at -80°C.
The product is shipped with ice packs. Upon receipt, store it immediately at -80°C

Storage Buffer:
PBS Only

For technical support and original validation data for this product please contact:

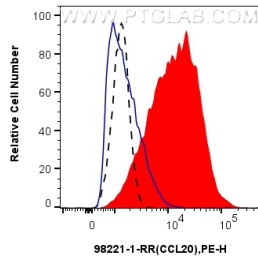
T: 4006900926

E: Proteintech-CN@ptglab.com

W: ptgcn.com

This product is exclusively available under Proteintech Group brand and is not available to purchase from any other manufacturer.

Selected Validation Data



1x10⁶ PMA, LPS and Brefeldin A treated THP-1 cells were intracellularly stained with 0.25 ug Anti-Human CCL20/MIP-3 alpha Rabbit Recombinant Antibody (98221-1-RR, Clone: 241694B2) (red) or 0.25 ug Rabbit IgG Isotype Control Recombinant Antibody (98136-1-RR, Clone: 240953C9) (blue), and PE-Conjugated Goat Anti-Rabbit IgG(H+L). 1x10⁶ untreated THP-1 cells were intracellularly stained with 0.25 ug Anti-Human CCL20/MIP-3 alpha Rabbit Recombinant Antibody (98221-1-RR,

