

For Research Use Only

# Anti-Human CCL20/MIP-3 alpha Rabbit Recombinant Antibody

Catalog Number: 98221-1-RR



## Basic Information

<b>Catalog Number:</b> 98221-1-RR	<b>GenBank Accession Number:</b> NM_004591.3	<b>Purification Method:</b> Protein A purification
<b>Size:</b> 100ug, 1000 µg/ml	<b>GeneID (NCBI):</b> 6364	<b>CloneNo.:</b> 241694B2
<b>Source:</b> Rabbit	<b>UNIPROT ID:</b> P78556-1	
<b>Isotype:</b> IgG	<b>Full Name:</b> chemokine (C-C motif) ligand 20	
	<b>Calculated MW:</b> 11kDa	

## Applications

**Tested Applications:**  
FC (Intra)

**Species Specificity:**  
human

## Background Information

CCL20, also known as macrophage infiltrating factor protein 3 $\alpha$ , is a C-C chemokine that specifically binds to the receptor CCR6. CCL20 is produced in various tissues and by a wide range of immune cells, including neutrophils, natural killer cells, T-helper type 17 (Th17) cells, B cells, and various antigen-presenting cells, such as dendritic cells (DCs), Langerhans cells, and macrophages. Increased expression of CCL20 is likely involved in the increased recruitment of dendritic cells observed in fibroinflammatory diseases such as chronic obstructive pulmonary disease (COPD). CCL20 expression is increased by the proinflammatory cytokine IL-1 beta.

## Storage

**Storage:**  
Store at 2 - 8°C. Stable for one year after shipment.

**Storage Buffer:**  
PBS with 0.09% sodium azide, pH 7.3.

For technical support and original validation data for this product please contact:

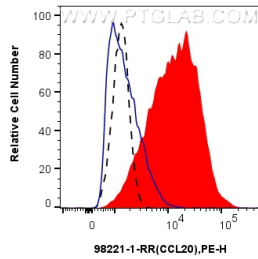
T: 4006900926

E: [Proteintech-CN@ptglab.com](mailto:Proteintech-CN@ptglab.com)

W: [ptgcn.com](http://ptgcn.com)

**This product is exclusively available under Proteintech Group brand and is not available to purchase from any other manufacturer.**

## Selected Validation Data



1x10<sup>6</sup> PMA, LPS and Brefeldin A treated THP-1 cells were intracellularly stained with 0.25 ug Anti-Human CCL20/MIP-3 alpha Rabbit Recombinant Antibody (98221-1-RR, Clone: 241694B2) (red) or 0.25 ug Rabbit IgG Isotype Control Recombinant Antibody (98136-1-RR, Clone: 240953C9) (blue), and PE-Conjugated Goat Anti-Rabbit IgG(H+L). 1x10<sup>6</sup> untreated THP-1 cells were intracellularly stained with 0.25 ug Anti-Human CCL20/MIP-3 alpha Rabbit Recombinant Antibody (98221-1-RR,

