

For Research Use Only

Anti-Human C5AR1/CD88 Rabbit Recombinant Antibody, PBS Only

Catalog Number: 98226-1-PBS



Basic Information

Catalog Number:

98226-1-PBS

Size:

1mg, 2 mg/ml

Source:

Rabbit

Isotype:

IgG

GenBank Accession Number:

NM_001736.4

GeneID (NCBI):

728

UNIPROT ID:

P21730

Full Name:

complement component 5a receptor 1

Calculated MW:

39kDa

Purification Method:

Protein A purification

CloneNo.:

241712D4

Applications

Tested Applications:

FC

Species Specificity:

human

Background Information

C5aR, also named CD88, is a G protein-coupled receptor for the anaphylatoxin C5a, a cleavage product of the complement cascade. The C5a ligand is a proinflammatory component of host defense. C5aR is activated upon binding of the C5a molecule. Receptor activation stimulates chemotaxis, granule enzyme release, intracellular calcium release, and superoxide anion production.

Storage

Storage:

Store at -80°C.

The product is shipped with ice packs. Upon receipt, store it immediately at -80°C

Storage Buffer:

PBS Only

For technical support and original validation data for this product please contact:

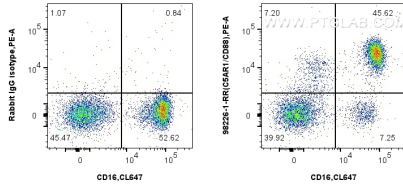
T: 4006900926

E: Proteintech-CN@ptglab.com

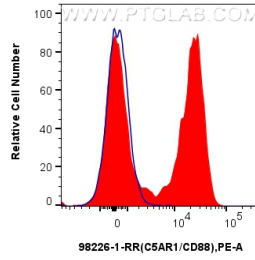
W: ptgcn.com

This product is exclusively available under Proteintech Group brand and is not available to purchase from any other manufacturer.

Selected Validation Data



1x10⁶ human peripheral blood leukocytes were surface stained with 0.25 ug Anti-Human C5AR1/CD88 Rabbit Recombinant Antibody (98226-1-RR, Clone: 241712D4) or 0.25 ug Rabbit IgG Isotype Control Recombinant Antibody (98136-1-RR, Clone: 240953C9), and PE-Conjugated Goat Anti-Rabbit IgG(H+L). Cells were co-stained with CoraLite® Plus 647 Anti-Human CD16. Cells were incubated with FC Receptor Block prior to staining. Cells were not fixed. This data was developed using



1x10⁶ human peripheral blood leukocytes were surface stained with 0.25 ug Anti-Human C5AR1/CD88 Rabbit Recombinant Antibody (98226-1-RR, Clone: 241712D4) (red) or 0.25 ug Rabbit IgG Isotype Control Recombinant Antibody (98136-1-RR, Clone: 240953C9) (blue), and PE-Conjugated Goat Anti-Rabbit IgG(H+L). Cells were incubated with FC Receptor Block prior to staining. Cells were not fixed. This data was developed using the same antibody clone with 98226-1-PBS in a