

For Research Use Only

# Anti-Human INSR/CD220 Rabbit Recombinant Antibody

Catalog Number: 98227-1-RR



## Basic Information

Catalog Number:

98227-1-RR

Size:

100ug, 1000 ug/ml

Source:

Rabbit

Isotype:

IgG

GenBank Accession Number:

BC117172

GeneID (NCBI):

3643

UNIPROT ID:

P06213

Full Name:

INSR

Purification Method:

Protein A purification

CloneNo.:

241687A10

## Applications

Tested Applications:

FC

Species Specificity:

human

## Background Information

The biological effects of INS are mediated by a membrane-spanning cell surface receptor that has been shown to consist of disulfide-linked alpha-subunits (135 kDa) and beta-subunits (95 kDa) that are cleaved products of a common precursor. The binding of INS to the receptor extracellular domain results in intracellular activation of a tyrosine-specific kinase activity and the generation of signals that determine the cellular response (PMID: 2369896).

## Storage

Storage:

Store at 2 - 8°C. Stable for one year after shipment.

Storage Buffer:

PBS with 0.09% sodium azide, pH 7.3.

For technical support and original validation data for this product please contact:

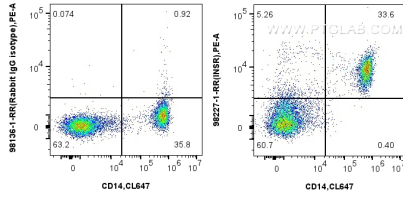
T: 4006900926

E: [Proteintech-CN@ptglab.com](mailto:Proteintech-CN@ptglab.com)

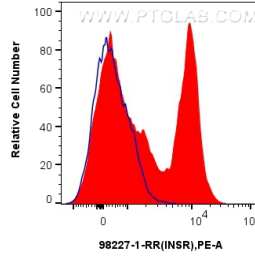
W: [ptgcn.com](http://ptgcn.com)

This product is exclusively available under Proteintech Group brand and is not available to purchase from any other manufacturer.

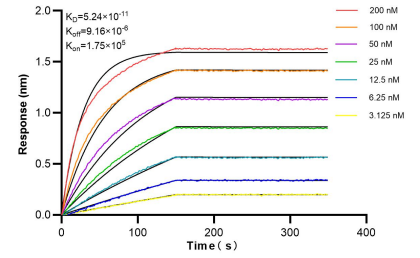
## Selected Validation Data



$1 \times 10^6$  FC receptor blocked human PBMCs were surface stained with 0.25  $\mu$ g Anti-Human INSR/CD220 Rabbit Recombinant Antibody (98227-1-RR, Clone: 241687A10) or 0.25  $\mu$ g Rabbit IgG Isotype Control Recombinant Antibody (98136-1-RR, Clone: 240953C9), and PE-Conjugated Goat Anti-Rabbit IgG(H+L). Cells were co-stained with 0.25  $\mu$ g CoraLite® Plus 647 Anti-Human CD14 Rabbit Recombinant Antibody (CL647-98040, Clone: 230332D7). Cells were not fixed.



$1 \times 10^6$  FC receptor blocked human PBMCs were surface stained with 0.25  $\mu$ g Anti-Human INSR/CD220 Rabbit Recombinant Antibody (98227-1-RR, Clone: 241687A10) (red) or 0.25  $\mu$ g Rabbit IgG Isotype Control Recombinant Antibody (98136-1-RR, Clone: 240953C9) (blue), and PE-Conjugated Goat Anti-Rabbit IgG(H+L). Cells were not fixed.



Bioluminescence resonance energy transfer (BLI) kinetic assays of 98227-1-RR against Human INSR/CD220 were performed. The affinity constant is 52.4 pM.