

For Research Use Only

# Anti-Human LILRB3/CD85a Rabbit Recombinant Antibody, PBS Only

Catalog Number: 98237-1-PBS



## Basic Information

<b>Catalog Number:</b> 98237-1-PBS	<b>GenBank Accession Number:</b> BC112198	<b>Purification Method:</b> Protein A purification
<b>Size:</b> 1mg, 2 mg/ml	<b>GeneID (NCBI):</b> 11025	<b>CloneNo.:</b> 241894C10
<b>Source:</b> Rabbit	<b>UNIPROT ID:</b> O75022	
<b>Isotype:</b> IgG	<b>Full Name:</b> leukocyte immunoglobulin-like receptor, subfamily B (with TM and ITIM domains), member 3	
	<b>Calculated MW:</b> 631 aa, 69 kDa	

## Applications

**Tested Applications:**  
FC

**Species Specificity:**  
human

## Background Information

The leukocyte immunoglobulin-like receptors (LIRs, also known as ILTs, CD85, and LILRs) comprise a family of related immunoregulatory receptors encoded within the leukocyte receptor cluster (LRC) at chromosomal region 19q13.4 (PMID: 11491530). LIRs are transmembrane proteins containing either two or four extracellular immunoglobulin domains, and have diverse functions, including the regulation of inflammation, immune tolerance, cell differentiation and nervous system plasticity (PMID: 16406677; 26040207). LILRB3, also known as ILT-5 or CD85a, belongs to the subfamily B class of LIR receptors which contain two or four extracellular immunoglobulin domains, a transmembrane domain, and two to four cytoplasmic immunoreceptor tyrosine-based inhibitory motifs (ITIMs). LILRB3 is found on the surface of a variety of cell types including monocytes/macrophages, granulocytes, NK cells and some T cells. It binds to MHC class I molecules and transduces a negative signal that inhibits stimulation of an immune response. LILRB3 has been reported as a myeloid cell checkpoint that elicits profound immunomodulation (PMID: 32870822).

## Storage

**Storage:**  
Store at -80°C.  
**The product is shipped with ice packs. Upon receipt, store it immediately at -80°C**

**Storage Buffer:**  
PBS Only

For technical support and original validation data for this product please contact:

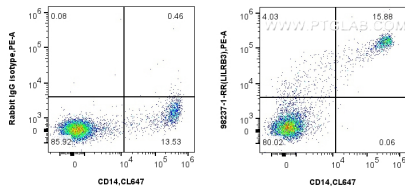
T: 4006900926

E: [Proteintech-CN@ptglab.com](mailto:Proteintech-CN@ptglab.com)

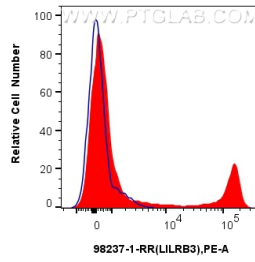
W: [ptgcn.com](http://ptgcn.com)

**This product is exclusively available under Proteintech Group brand and is not available to purchase from any other manufacturer.**

## Selected Validation Data



1x10<sup>6</sup> human PBMCs were surface stained with 0.25 ug Anti-Human LILRB3/CD85a Rabbit Recombinant Antibody (98237-1-RR, Clone: 241894C10) or 0.25 ug Rabbit IgG Isotype Control Recombinant Antibody (98136-1-RR, Clone: 240953C9), and PE-Conjugated Goat Anti-Rabbit IgG(H+L). Cells were co-stained with CoraLite® Plus 647 Anti-Human CD14. Cells were incubated with FC Receptor Block prior to staining. Cells were not fixed. This data was developed using the



1x10<sup>6</sup> human PBMCs were surface stained with 0.25 ug Anti-Human LILRB3/CD85a Rabbit Recombinant Antibody (98237-1-RR, Clone: 241894C10)(red) or 0.25 ug Rabbit IgG Isotype Control Recombinant Antibody (98136-1-RR, Clone: 240953C9) (blue), and PE-Conjugated Goat Anti-Rabbit IgG(H+L). Cells were incubated with FC Receptor Block prior to staining. Cells were not fixed. This data was developed using the same antibody clone with 98237-1-PBS in a different storage buffer