

For Research Use Only

Anti-Human KIM-1/HAVCR1 Rabbit Recombinant Antibody, PBS Only

Catalog Number: 98238-1-PBS



Basic Information

Catalog Number: 98238-1-PBS	GenBank Accession Number: NM_001173393.3	Purification Method: Protein A purification
Size: 1mg, 2 mg/ml	GeneID (NCBI): 26762	CloneNo.: 242001E8
Source: Rabbit	UNIPROT ID: Q96D42	
Isotype: IgG	Full Name: hepatitis A virus cellular receptor 1	
	Calculated MW: 39kDa	

Applications

Tested Applications:
FC

Species Specificity:
human

Background Information

Kidney injury molecule 1 (KIM-1), also known as Hepatitis A virus cellular receptor 1 (HAVCR1), CD365, or T-cell immunoglobulin and mucin domain 1 (TIM-1), is a class I integral membrane glycoprotein, with an ectodomain containing Ig-like domain and a mucin domain. KIM-1 acts as a membrane receptor for hepatitis A virus (HAV) (PMID: 9658108; 8861957). KIM-1 provides a costimulatory signal for T cell activation and inhibits the development of peripheral tolerance (PMID: 16284246; 15793575). KIM-1 may be involved in the regulation of asthma and allergic diseases (PMID: 14534576). It has been reported that KIM-1 is shed into urine after acute kidney damage and is a marker of renal tubular injury (PMID: 14600030).

Storage

Storage:
Store at -80°C.
The product is shipped with ice packs. Upon receipt, store it immediately at -80°C

Storage Buffer:
PBS Only

For technical support and original validation data for this product please contact:

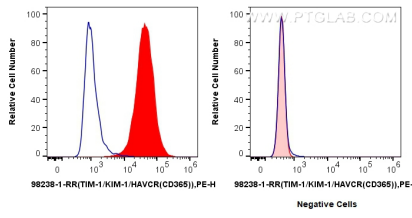
T: 4006900926

E: Proteintech-CN@ptglab.com

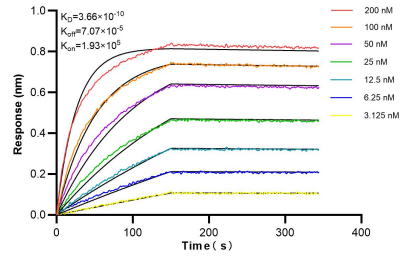
W: ptgcn.com

This product is exclusively available under Proteintech Group brand and is not available to purchase from any other manufacturer.

Selected Validation Data



1×10^6 HuH-7 cells (left) or 293-T cells (right) were surface stained with 0.25 μ g Anti-Human KIM-1/HAVCR1 Rabbit Recombinant Antibody (98238-1-RR, Clone: 242001E8) (red) or 0.25 μ g Rabbit IgG Isotype Control Recombinant Antibody (98136-1-RR, Clone: 240953C9) (blue), and PE-Conjugated Goat Anti-Rabbit IgG(H+L). Cells were not fixed. This data was developed using the same antibody clone with 98238-1-PBS in a different storage buffer formulation.



Biacore BLI kinetic assays of 98238-1-RR against Human KIM-1/HAVCR1 were performed. The affinity constant is 0.366 nM.