

For Research Use Only

Anti-Human Jagged1/CD339 Rabbit Recombinant Antibody

Catalog Number: 98243-1-RR



Basic Information

Catalog Number: 98243-1-RR	GenBank Accession Number: BC098393	Purification Method: Protein A purification
Size: 100ug, 1000 ug/ml	GeneID (NCBI): 182	CloneNo.: 241412A6
Source: Rabbit	UNIPROT ID: P78504	
Isotype: IgG	Full Name: jagged 1 (Alagille syndrome)	
	Calculated MW: 1218 aa, 134 kDa	

Applications

Tested Applications:
FC

Species Specificity:
human

Background Information

Jagged1 (JAG1), also known as CD339, is a type I, membrane-anchored, multi-domain protein and a ligand of the Notch receptor (PMID: 15358557). Jagged1 is composed of a relatively small intracellular domain, a transmembrane domain, and a larger extracellular component containing a cysteine-rich region, 16 EGF-like repeats, a DSL domain, and a signal peptide (PMID: 15358557; 26548814). It is widely expressed throughout mammalian development, across many tissues and developmental stages (PMID: 26548814). The Jagged1-NOTCH interaction can trigger the Notch signaling and activate transcription factors that play key roles in cell differentiation and morphogenesis.

Storage

Storage:
Store at 2 - 8°C. Stable for one year after shipment.

Storage Buffer:
PBS with 0.09% sodium azide, pH 7.3.

For technical support and original validation data for this product please contact:

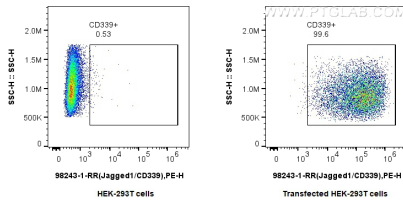
T: 4006900926

E: Proteintech-CN@ptglab.com

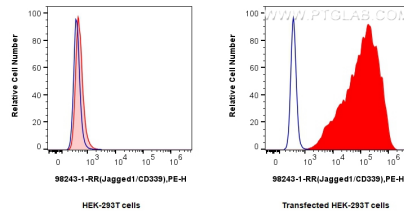
W: ptgcn.com

This product is exclusively available under Proteintech Group brand and is not available to purchase from any other manufacturer.

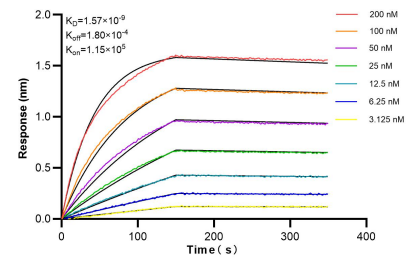
Selected Validation Data



1x10⁶ HEK-293T cells or Jagged1/CD339 transfected HEK-293T cells were surface stained with 0.25 ug Anti-Human Jagged1 Rabbit Recombinant Antibody (98243-1-RR, Clone:241412A6) and PE-Conjugated Goat Anti-Rabbit IgG(H+L). Cells were not fixed.



1x10⁶ HEK-293T cells (left) or Jagged1/CD339 transfected HEK-293T cells (right) were surface stained with 0.25 ug Anti-Human Jagged1/CD339 Rabbit Recombinant Antibody (98243-1-RR, Clone:241412A6) or Rabbit IgG Isotype Control Recombinant Antibody (98136-1-RR, Clone:240953C9) (blue), and PE-Conjugated Goat Anti-Rabbit IgG(H+L). Cells were not fixed.



Biacore BLI kinetic assays of 98243-1-RR against Human Jagged1/CD339 were performed. The affinity constant is 1.57 nM.