

For Research Use Only

# CLEC10A/CD301 Recombinant antibody, PBS Only

Catalog Number: 98245-1-PBS



## Basic Information

<b>Catalog Number:</b> 98245-1-PBS	<b>GenBank Accession Number:</b> BC039011	<b>Purification Method:</b> Protein A purification
<b>Size:</b> 1mg, 2 mg/ml	<b>GeneID (NCBI):</b> 10462	<b>CloneNo.:</b> 241857C11
<b>Source:</b> Rabbit	<b>UNIPROT ID:</b> Q8IUN9	
<b>Isotype:</b> IgG	<b>Full Name:</b> C-type lectin domain family 10, member A	
	<b>Calculated MW:</b> 316 aa, 35 kDa	

## Applications

**Tested Applications:**  
FC

**Species Specificity:**  
human

## Background Information

C-type lectin domain family 10 member A (CLEC10A), also known as CD301, macrophage galactose-type C-type lectin (MGL), DC-asialoglyco protein receptor (DC-ASGP-R) or human macrophage lectin (HML), is a type II transmembrane glycoprotein having a calcium-dependent carbohydrate recognition domain (PMID: 8598452; 11919201; 11698450). CLEC10A is expressed exclusively by myeloid professional antigen-presenting cells such as immature dendritic cells (DCs) and alternatively activated macrophages (PMID: 16998493). CLEC10A is a marker for human CD1c+ DCs (cDC2) (PMID: 29755453). It functions as an endocytic receptor for glycosylated antigens (PMID: 11919201).

## Storage

**Storage:**  
Store at -80°C.  
**The product is shipped with ice packs. Upon receipt, store it immediately at -80°C**

**Storage Buffer:**  
PBS Only

For technical support and original validation data for this product please contact:

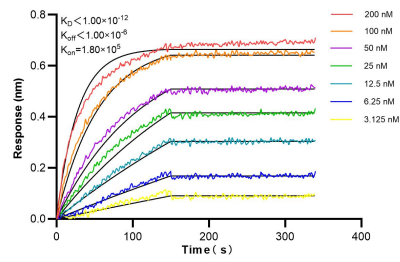
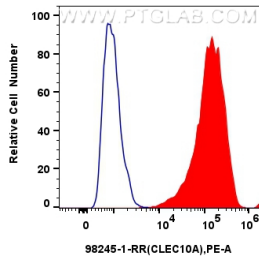
T: 4006900926

E: [Proteintech-CN@ptglab.com](mailto:Proteintech-CN@ptglab.com)

W: [ptgcn.com](http://ptgcn.com)

**This product is exclusively available under Proteintech Group brand and is not available to purchase from any other manufacturer.**

## Selected Validation Data



1x10<sup>6</sup> Human immature monocyte-derived dendritic cells were surface stained with 0.25 ug Anti-Human CLEC10A/CD301 Rabbit Recombinant Antibody (98245-1-RR, Clone: 241857C11) (red) or 0.25 ug Rabbit IgG Isotype Control Recombinant Antibody (98136-1-RR, Clone: 240953C9) (blue), and PE-Conjugated Goat Anti-Rabbit IgG(H+L). Cells were incubated with FC Receptor Block prior to staining. Cells were not fixed. This data was developed using the same antibody clone.

Biolayer interferometry (BLI) kinetic assays of 98245-1-RR against Human CLEC10A/CD301 were performed. The affinity constant is below 1 pM.