

For Research Use Only

Anti-GGGGS Linker Rabbit Recombinant Antibody, PBS Only

Catalog Number: 98262-1-PBS



Basic Information

Catalog Number:

98262-1-PBS

Concentration:

1mg, 2000 ug/ml

Source:

Rabbit

Isotype:

IgG

GenBank Accession Number:

GeneID (NCBI):

Full Name:

Purification Method:

Protein A purification

CloneNo.:

242306C8

Applications

Tested Applications:

WB, IHC, IF/ICC, FC

Species Specificity:

recombinant protein

Background Information

As a crucial element in the design of recombinant fusion proteins, linkers play an increasingly vital role in the construction of stable, bioactive fusion proteins (PMID: 23026637). GGGGS linker (G4S linker) is a flexible linker made of 4 glycine repeats followed by a serine amino acid (PMID:3045807). Due to its flexibility and resistance to proteases, GGGGS and its repeats are commonly used when engineering a protein, particularly in the construction of single-chain Fv (ScFv) domains expressed on the surfaces of CAR-T cells (PMID:23581628; 36874404). This antibody, raised against a synthetic peptide (GGGGSGGGSGGGGS), can recognize G4S, G4S*2, G4S*3, G4S*4, and G4S*5.

Storage

Storage:

Store at -80°C.

The product is shipped with ice packs. Upon receipt, store it immediately at -80°C

Storage Buffer:

PBS only, pH7.3

For technical support and original validation data for this product please contact:

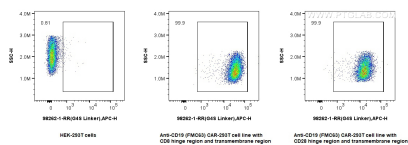
T: 4006900926

E: Proteintech-CN@ptglab.com

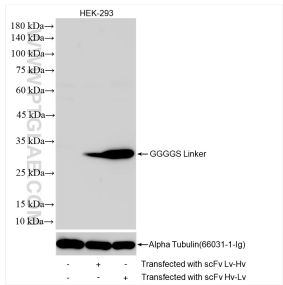
W: ptgcn.com

This product is exclusively available under Proteintech Group brand and is not available to purchase from any other manufacturer.

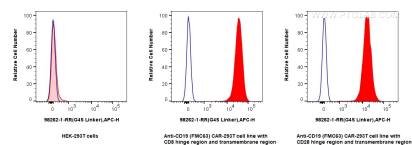
Selected Validation Data



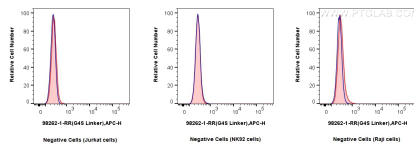
1x10⁶ HEK-293T cells or anti-CD19 (FMC63) CAR with CD28 or CD8 hinge region and transmembrane region transfected HEK-293T cells were surface stained with 0.25 ug Anti G4S Linker Rabbit RecAb (98262-1-RR, Clone:242306C8) and Multi-rAb CoraLite Plus 647-Goat Anti-Rabbit Recombinant Secondary Antibody (H+L) (RGAR005). Cells were not fixed. This data was developed using the same antibody clone with 98262-1-PBS in a different storage buffer formulation.



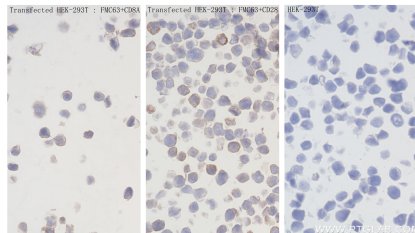
Various lysates were subjected to SDS PAGE followed by western blot with 98262-1-RR (GGGGS Linker antibody) at dilution of 1:3000 incubated at room temperature for 1.5 hours. This data was developed using the same antibody clone with 98262-1-PBS in a different storage buffer formulation.



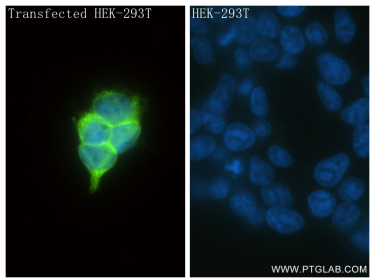
1x10⁶ HEK-293T cells or anti-CD19 (FMC63) CAR with CD28 or CD8 hinge region and transmembrane region transfected HEK-293T cells were surface stained with 0.25 ug Anti G4S Linker Rabbit RecAb (98262-1-RR, Clone:242306C8) and Multi-rAb CoraLite Plus 647-Goat Anti-Rabbit Recombinant Secondary Antibody (H+L) (RGAR005) (red), or Rabbit IgG Isotype Control RecAb (98136-1-RR, Clone: 240953C9) (blue). Cells were not fixed This data was developed using the same antibody



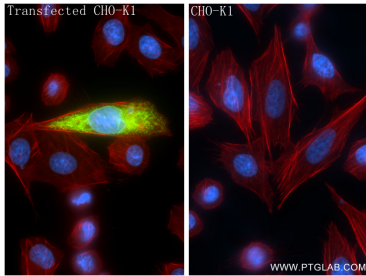
1x10⁶ Jurkat cells or NK92 cells or Raji cells were surface stained with 0.25 ug Anti G4S Linker Rabbit RecAb (98262-1-RR, Clone: 242306C8) (red) or Rabbit IgG Isotype Control RecAb (98136-1-RR, Clone: 240953C9) (blue), and Multi-rAb CoraLite Plus 647-Goat Anti-Rabbit Recombinant Secondary Antibody (H+L) (RGAR005). Cells were not fixed This data was developed using the same antibody clone with 98262-1-PBS in a different storage buffer formulation.



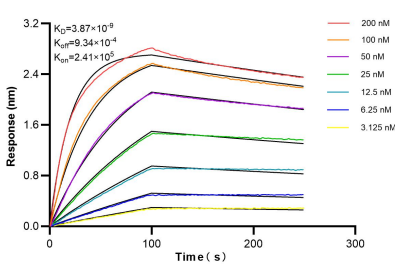
Immunohistochemical analysis of paraffin-embedded Transfected HEK-293T cells slide using 98262-1-RR (GGGGS Linker antibody) at dilution of 1:80000 (under 40x lens). This data was developed using the same antibody clone with 98262-1-PBS in a different storage buffer formulation.



Immunofluorescent analysis of (-20°C Ethanol) fixed Transfected HEK-293T cells using GGGGS Linker antibody (98262-1-RR, Clone: 242306C8) at dilution of 1:4000 and CoraLite® 488-Conjugated Goat Anti-Rabbit IgG(H+L) (SA00013-2). This data was developed using the same antibody clone with 98262-1-PBS in a different storage buffer formulation.



Immunofluorescent analysis of (-20°C Ethanol) fixed Transfected CHO-K1 cells using GGGGS Linker antibody (98262-1-RR, Clone: 242306C8) at dilution of 1:2000 and CoraLite® 488-Conjugated Goat Anti-Rabbit IgG(H+L) (SA00013-2), CL594-Phalloidin (red). This data was developed using the same antibody clone with 98262-1-PBS in a different storage buffer formulation.



Biolayer interferometry (BLI) kinetic assays of 98262-1-RR against scFv (single chain fragment variable) format with variable regions of heavy (VH) and light (VL) chains joined together by G4S linker were performed. The affinity constant is 3.87 nM.