

For Research Use Only

Anti-Human SIRP beta 1/CD172b Rabbit Recombinant Antibody, PBS Only

Catalog Number: 98267-1-PBS



Basic Information

Catalog Number:

98267-1-PBS

Size:

1mg, 2 mg/ml

Source:

Rabbit

Isotype:

IgG

GenBank Accession Number:

NM_006065.5

GeneID (NCBI):

10326

UNIPROT ID:

O00241-1

Full Name:

signal-regulatory protein beta 1

Calculated MW:

43kDa

Purification Method:

Protein A purification

CloneNo.:

242115C10

Applications

Tested Applications:

FC

Species Specificity:

human

Background Information

SIRP beta 1, also known as CD172b, is a member of the signal-regulatory-protein (SIRP) family and also belongs to the immunoglobulin superfamily. SIRP family members are cell surface signaling receptors differentially expressed in leukocytes and the central nervous system. SIRP beta 1 interacts with TYROBP/DAP12, a protein-bearing immunoreceptor tyrosine-based activation motif. SIRP beta 1 also participates in the recruitment of tyrosine kinase SYK.

Storage

Storage:

Store at -80°C.

The product is shipped with ice packs. Upon receipt, store it immediately at -80°C

Storage Buffer:

PBS Only

For technical support and original validation data for this product please contact:

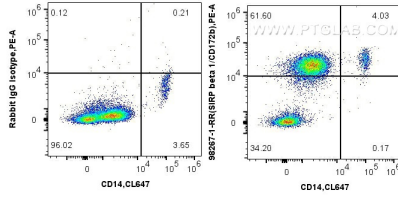
T: 4006900926

E: Proteintech-CN@ptglab.com

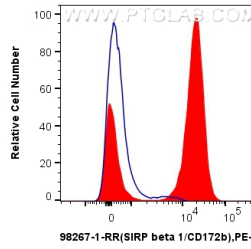
W: ptgcn.com

This product is exclusively available under Proteintech Group brand and is not available to purchase from any other manufacturer.

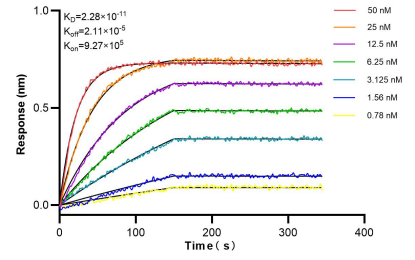
Selected Validation Data



1x10⁶ human peripheral blood leukocytes were surface stained with 0.25 ug Anti-Human SIRP beta 1/CD172b Rabbit Recombinant Antibody (98267-1-RR, Clone: 242115C10) or Rabbit IgG Isotype Control Recombinant Antibody (98136-1-RR, Clone: 240953C9), and PE-Conjugated Goat Anti-Rabbit IgG(H+L). Cells were co-stained with Coralite® Plus 647 Anti-Human CD14. Cells were incubated with FC Receptor Block prior to staining. Cells were not fixed. This data was developed using



1x10⁶ human peripheral blood leukocytes were surface stained with 0.25 ug Anti-Human SIRP beta 1/CD172b Rabbit Recombinant Antibody (98267-1-RR, Clone: 242115C10) (red) or Rabbit IgG Isotype Control Recombinant Antibody (98136-1-RR, Clone: 240953C9) (blue), and PE-Conjugated Goat Anti-Rabbit IgG(H+L). Cells were incubated with FC Receptor Block prior to staining. Cells were not fixed. This data was developed using the same antibody clone with 98267-1-PBS in



Bi-layer interferometry (BLI) kinetic assays of 98267-1-RR against Human SIRP beta 1/CD172b were performed. The affinity constant is 22.8 pM.