

For Research Use Only

Anti-Human PSMA/GCPII Rabbit Recombinant Antibody, PBS Only

Catalog Number: 98279-1-PBS



Basic Information

Catalog Number:

98279-1-PBS

Concentration:

1mg, 2 mg/ml

Source:

Rabbit

Isotype:

IgG

GenBank Accession Number:

NM_004476.3

GeneID (NCBI):

2346

UNIPROT ID:

Q04609

Full Name:

folate hydrolase (prostate-specific membrane antigen) 1

Calculated MW:

84KD

Purification Method:

Protein A purification

CloneNo.:

242026E6

Applications

Tested Applications:

FC

Species Specificity:

human

Background Information

PSMA (Prostate-specific membrane antigen) is also named as FOLH1, FOLH, NAALAD1, PSM and belongs to the peptidase M28 family. PSMA is a 100-120 kDa integral transmembrane glycoprotein, considered to be a highly specific marker of the prostate gland, and has successfully been used as a marker of circulating prostatic epithelial cells (PMID:10074909; 15680901). It is involved in conversion of the major neurotransmitter (NAAG) to NAA and free glutamate. It has 8 isoforms produced by alternative splicing.

Storage

Storage:

Store at -80°C.

The product is shipped with ice packs. Upon receipt, store it immediately at -80°C

Storage Buffer:

PBS only

For technical support and original validation data for this product please contact:

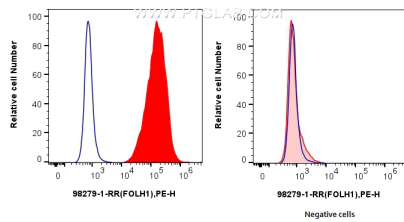
T: 4006900926

E: Proteintech-CN@ptglab.com

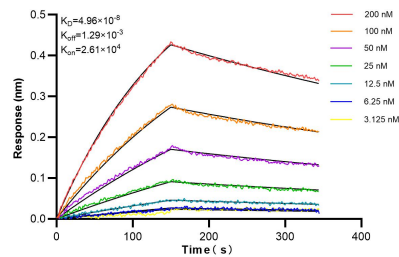
W: ptgcn.com

This product is exclusively available under Proteintech Group brand and is not available to purchase from any other manufacturer.

Selected Validation Data



1x10⁶ LNCaP cells (left) or HeLa (right) were surface stained with 0.25 ug Anti-Human FOLH1 Rabbit RecAb (98279-1-RR, Clone: 242026E6) (red), or Rabbit IgG Isotype Control RecAb (98136-1-RR, Clone: 240953C9) (blue) and PE-Conjugated Goat Anti-Rabbit IgG(H+L). Cells were not fixed. This data was developed using the same antibody clone with 98279-1-PBS in a different storage buffer formulation.



Biolayer interferometry (BLI) kinetic assays of 98279-1-RR against Human PSMA/GCPII were performed. The affinity constant is 49.6 nM.