

For Research Use Only

Anti-Mouse FcεR1α Rabbit Recombinant Antibody, PBS Only

Catalog Number: 98289-1-PBS



Basic Information

Catalog Number:

98289-1-PBS

Size:

1mg, 2 mg/ml

Source:

Rabbit

Isotype:

IgG

GenBank Accession Number:

NM_010184.2

GeneID (NCBI):

14125

UNIPROT ID:

P20489

Full Name:

Fc receptor, IgE, high affinity I, alpha polypeptide

Calculated MW:

29 kDa

Purification Method:

Protein A purification

CloneNo.:

242008G6

Applications

Tested Applications:

FC

Species Specificity:

mouse

Background Information

Fc epsilon Receptor I alpha (FcεR1α) is a single-pass type I membrane protein that contains 2 immunoglobulin-like domains. FcεR1α forms a tetrameric complex, FcεRI, with one beta and two gamma subunits (PMID: 19406478). FcεRI is the high-affinity receptor for the Fc region of immunoglobulin E (IgE) (PMID: 1532373). It is expressed on mast cells and basophils and plays a central role in the allergic response (PMID: 2148316).

Storage

Storage:

Store at -80°C.

The product is shipped with ice packs. Upon receipt, store it immediately at -80°C

Storage Buffer:

PBS Only

For technical support and original validation data for this product please contact:

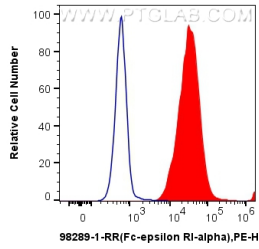
T: 4006900926

E: Proteintech-CN@ptglab.com

W: ptgcn.com

This product is exclusively available under Proteintech Group brand and is not available to purchase from any other manufacturer.

Selected Validation Data



1x10⁶ MC/9 cells were surface stained with 0.25 ug Anti-Mouse Fc-epsilon RI-alpha (FcεRI) Rabbit RecAb (98289-1-RR, Clone: 242008G6) (red) or 0.25 ug Rabbit IgG Isotype Control RecAb (98136-1-RR, Clone: 240953C9) (blue), and PE-Conjugated Goat Anti-Rabbit IgG(H+L). Cells were not fixed. This data was developed using the same antibody clone with 98289-1-PBS in a different storage buffer formulation.