

For Research Use Only

Anti-Human ICAM-2/CD102 Rabbit Recombinant Antibody, PBS Only

Catalog Number: 98367-1-PBS



Basic Information

Catalog Number: 98367-1-PBS	GenBank Accession Number: NM_001099789.2	Purification Method: Protein A purification
Size: 1mg, 2 mg/ml	GeneID (NCBI): 3384	CloneNo.: 242237F8
Source: Rabbit	UNIPROT ID: P13598	
Isotype: IgG	Full Name: intercellular adhesion molecule 2	
	Calculated MW: 31kDa	

Applications

Tested Applications:
FC

Species Specificity:
human

Background Information

ICAM2 is a cell adhesion protein having important roles in cell migration, especially during inflammation when leukocytes cross the endothelium. Initially described as a receptor for lymphocyte function-associated antigen-1 (LFA1), ICAM2 may play a role in lymphocyte recirculation by blocking LFA-1-dependent cell adhesion. It mediates adhesive interactions important for antigen-specific immune response, NK-cell mediated clearance, lymphocyte recirculation, and other cellular interactions important for immune response and surveillance.

Storage

Storage:
Store at -80°C.
The product is shipped with ice packs. Upon receipt, store it immediately at -80°C

Storage Buffer:
PBS Only

For technical support and original validation data for this product please contact:

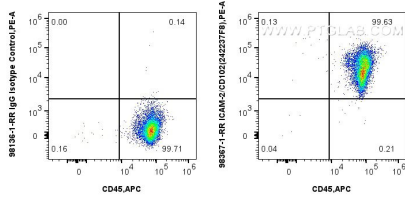
T: 4006900926

E: Proteintech-CN@ptglab.com

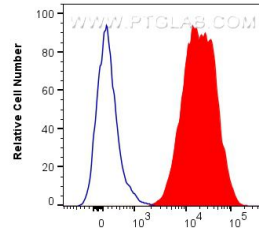
W: ptgcn.com

This product is exclusively available under Proteintech Group brand and is not available to purchase from any other manufacturer.

Selected Validation Data



1x10⁶ human PBMCs were surface stained with 0.25 ug Anti-Human ICAM-2/CD102 Rabbit RecAb (98367-1-RR, Clone:242237F8) or 0.25 ug Rabbit IgG Isotype Control RecAb (98136-1-RR, Clone: 240953C9) and PE-Conjugated Goat Anti-Rabbit IgG(H+L). Cells were then stained with APC Anti-Human CD45. Cells were incubated with FC Receptor Block prior to staining. Cells were not fixed. This data was developed using the same antibody clone with 98367-1-PBS in a



98367-1-RR ICAM-2/CD102(242237F8), PE-A

1x10⁶ human PBMCs were surface stained with 0.25 ug Anti-Human ICAM-2/CD102 Rabbit RecAb (98367-1-RR, Clone:242237F8) (red) or 0.25 ug Rabbit IgG Isotype Control RecAb (98136-1-RR, Clone: 240953C9) (blue) and PE-Conjugated Goat Anti-Rabbit IgG(H+L). Cells were incubated with FC Receptor Block prior to staining. Cells were not fixed. This data was developed using the same antibody clone with 98367-1-PBS in a different storage buffer formulation.

