

For Research Use Only

Rat IgG2a Isotype Control Recombinant Antibody, PBS Only

Catalog Number: 98427-1-PBS



Basic Information

Catalog Number:

98427-1-PBS

Concentration:

1mg, 2 mg/ml

Source:

Rat

Isotype:

IgG2a

GenBank Accession Number:

GeneID (NCBI):

Full Name:

Purification Method:

Protein A purification

CloneNo.:

250862A1

Applications

Tested Applications:

FC

Species Specificity:

n/a

Background Information

This product is an isotype control antibody, which is used to estimate the non-specific binding of target primary antibodies due to Fc receptor binding or other protein-protein interactions. An isotype control antibody should have the same immunoglobulin type and be used at the same concentration as the test antibody.

Storage

Storage:

Store at -80°C.

The product is shipped with ice packs. Upon receipt, store it immediately at -80°C

Storage Buffer:

PBS only, pH7.3

For technical support and original validation data for this product please contact:

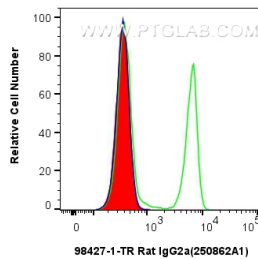
T: 4006900926

E: Proteintech-CN@ptglab.com

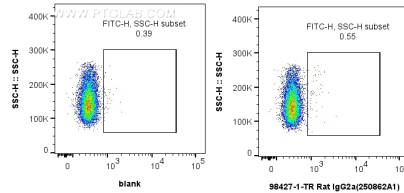
W: ptgcn.com

This product is exclusively available under Proteintech Group brand and is not available to purchase from any other manufacturer.

Selected Validation Data



1x10⁶ mouse splenocytes were surface stained with 0.25 ug Rat IgG2a Isotype Control RecAb (98427-1-TR, Clone: 250862A1) and FITC anti-rat IgG2a at dilution 1:100 (red), or 0.25 ug Anti-Mouse CD4 (65141-1-Ig, Clone: RM4-5) and FITC anti-rat IgG2a at dilution 1:100 (green), or unstained (blue). Cells were not fixed. This data was developed using the same antibody clone with 98427-1-PBS in a different storage buffer formulation.



1x10⁶ mouse splenocytes were surface stained with 0.25 ug Rat IgG2a Isotype Control RecAb (98427-1-TR, Clone: 250862A1) and FITC anti-rat IgG2a at dilution 1:100 (right), or unstained (left). Cells were not fixed. This data was developed using the same antibody clone with 98427-1-PBS in a different storage buffer formulation.