

For Research Use Only

Atlantic Blue™ Anti-Human CD3 (SK7)

Catalog Number: AB-65148



Basic Information

Catalog Number: AB-65148	GenBank Accession Number: BC049847	Purification Method: Affinity purification
Size: 100tests, 5 ul/test	GeneID (NCBI): 916	CloneNo.: SK7
Source: Mouse	ENSEMBL Gene ID: ENSG00000198851	Excitation/Emission maxima wavelengths: 404 nm / 458 nm
Isotype: IgG1, kappa	Full Name: CD3e molecule, epsilon (CD3-TCR complex)	
	Calculated MW: 207 aa, 23 kDa	

Applications

Tested Applications:
FC

Species Specificity:
human

Background Information

CD3 is a multimeric protein associated with the T-cell receptor (TCR) to form a complex involved in antigen recognition and signal transduction (PMID: 15885124). CD3 is composed of CD3 γ , δ , ϵ , and ζ chains (PMID: 1826255). It is expressed by thymocytes in a developmentally regulated manner, T cells, and some NK cells (PMID: 3289580). The TCR recognizes antigens bound to major histocompatibility complex (MHC) molecules. TCR-mediated peptide-MHC recognition is transmitted to the CD3 complex, leading to the intracellular signal transduction (PMID: 11985657).

Storage

Storage:
Store at 2-8°C. Avoid exposure to light. Stable for one year after shipment.

Storage Buffer:
PBS with 0.09% sodium azide and 0.5% BSA.

For technical support and original validation data for this product please contact:

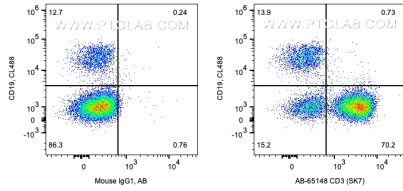
T: 4006900926

E: Proteintech-CN@ptglab.com

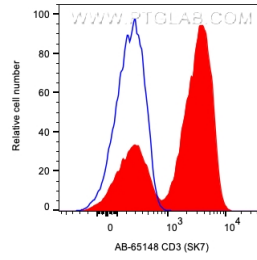
W: ptgcn.com

This product is exclusively available under Proteintech Group brand and is not available to purchase from any other manufacturer.

Selected Validation Data



1x10⁶ human PBMCs were surface stained with CL488 Anti-Human CD19 (CL488-65197, Clone: 4G7) and 5 ul Atlantic Blue™ Anti-Human CD3 (AB-65148, Clone: SK7) or Atlantic Blue™ Mouse IgG1 Isotype Control (AB-65124, Clone: MOPC-21). Cells were not fixed. Lymphocytes were gated.



1x10⁶ human PBMCs were surface stained with 5 ul Atlantic Blue™ Anti-Human CD3 (AB-65148, Clone:SK7) or Atlantic Blue™ Mouse IgG1 Isotype Control (AB-65124, Clone: MOPC-21). Cells were not fixed. Lymphocytes were gated.