

For Research Use Only

# APC Anti-Human CD20 (2H7)

Catalog Number: APC-65085



## Basic Information

<b>Catalog Number:</b> APC-65085	<b>GenBank Accession Number:</b> BC002807	<b>Purification Method:</b> Affinity purification
<b>Size:</b> 100tests, 5 µl/test	<b>GeneID (NCBI):</b> 931	<b>CloneNo.:</b> 2H7
<b>Source:</b> Mouse	<b>UNIPROT ID:</b> P11836	<b>Excitation/Emission maxima wavelengths:</b> 650 nm / 660 nm
<b>Isotype:</b> IgG2b, kappa	<b>Full Name:</b> membrane-spanning 4-domains, subfamily A, member 1	
	<b>Calculated MW:</b> 297 aa, 33 kDa	

## Applications

**Tested Applications:**  
FC

**Species Specificity:**  
Human

## Background Information

CD20 is a 33-37 kDa transmembrane phosphoprotein belonging to the membrane-spanning 4A family (PMID: 3260267; 16785532). CD20 is a B-lymphocyte surface molecule that is widely expressed during B-cell ontogeny, from early pre-B-cell developmental stages until final differentiation into plasma cells (PMID: 7524522). CD20 functions as calcium-permeable cation channel (PMID: 7684739). It is involved in the regulation of B-cell activation, proliferation and differentiation (PMID: 7524522).

## Storage

**Storage:**  
Store at 2-8°C. Avoid exposure to light. Stable for one year after shipment.

**Storage Buffer:**  
PBS with 0.09% sodium azide and 0.5% BSA.

For technical support and original validation data for this product please contact:

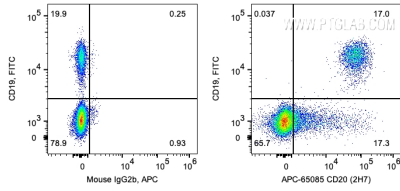
T: 4006900926

E: [Proteintech-CN@ptglab.com](mailto:Proteintech-CN@ptglab.com)

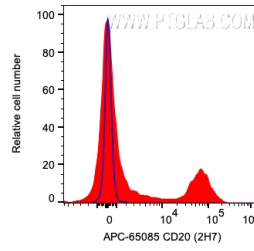
W: [ptgcn.com](http://ptgcn.com)

This product is exclusively available under Proteintech Group brand and is not available to purchase from any other manufacturer.

## Selected Validation Data



1X10<sup>6</sup> human PBMCs were surface co-stained with FITC Anti-Human CD19 and 5 ul APC Anti-Human CD20 (APC-65085, Clone:2H7) or Mouse IgG2b Isotype Control. Cells were not fixed. Lymphocytes were gated.



1X10<sup>6</sup> human PBMCs were surface stained with 5 ul Atlantic Blue™ Anti-Human CD81 (AB-65195, Clone:5A6) or Mouse IgG1 Isotype Control (66360-1-Ig, Clone: T1F8D3F10). Cells were not fixed. Lymphocytes were gated.