

FOR IN VITRO RESEARCH USE ONLY.
NOT FOR USE IN HUMANS OR ANIMALS.

Recombinant human CA11 protein



Basic Information

Catalog Number:
Ag33373

Form:
Available lyophilized

Species:
human

Expression Source:
e coli-derived, PGEX-4T, with N-terminal GST.

Biological Activity:
Not tested

Endotoxin Level:
Please contact the lab for more information

Peptide Sequence:
DAYFLQDLSLELLFPESFGFITYQGSLSTPPCSETVTWILIDRALNITSLQMHSRLRLSQNPSPQIFQSLSGNSRPLQPLAHRALRGNRDRPHPEERRCRGPNYRLHVDGVPHGR
(215-328 aa encoded by BC002662)

Reconstitution and Storage

Reconstitution:
Reconstitute at 0.25 µg/ µl in 200 µl sterile water for short-term storage.
After reconstitution with sterile water, if glycerol has no effect on subsequent experiments, it is recommended to add an equal volume of glycerol for long-term storage (see Stability and Storage for more details).
If a different concentration is needed for your purposes please adjust the reconstitution volume as required (please note: the ion concentration of the final solution will vary according to the volume used).
Note: Centrifuge vial before opening. When reconstituting, gently pipet and wash down the sides of the vial to ensure full recovery of the protein into solution.

Shipping:
The product is shipped at ambient temperature. Upon receipt, store it immediately at the recommended temperature (see below).

Purity

85%, by SDS-PAGE with Coomassie Brilliant Blue staining.

Formulation

The purified protein was Lyophilized from sterile PBS (58mM Na₂HPO₄, 17mM NaH₂PO₄, 68mM NaCl, pH8.). 5 % trehalose and 5 % mannitol are added as protectant before lyophilization. The elution buffer contain 100mM GSH.

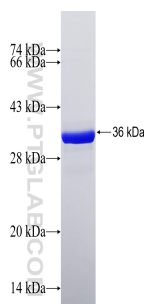
Stability and Storage

Store for up to 12 months at -20°C to -80°C as lyophilized powder.

Storage of Reconstituted Protein

Short Term Storage:
Store at 2-8°C for (1-2 weeks).
Long Term Storage:
Aliquot and store at -20°C to -80°C for up to 3 months, buffer containing 50% glycerol is recommended for reconstitution. Avoid repeat freeze-thaw cycles.

Selected Validation Data



For technical support and original validation data for this product please contact:
T: 4006900926 E: Proteintech-CN@ptglab.com W: ptgcn.com

This product is exclusively available under Proteintech Group brand and is not available to purchase from any other manufacturer.