

For Research Use Only

# Biotin Anti-Human HLA-DR (L243) Mouse IgG2a Recombinant Antibody

Catalog Number: Biotin-65560



## Basic Information

<b>Catalog Number:</b> Biotin-65560	<b>GenBank Accession Number:</b> BC032350	<b>Purification Method:</b> Protein A purification
<b>Size:</b> 100ug, 500 ug/ml	<b>GeneID (NCBI):</b> 3122	<b>CloneNo.:</b> L243
<b>Source:</b> Mouse	<b>ENSEMBL Gene ID:</b> ENSG00000204287	
<b>Isotype:</b> IgG2a	<b>UNIPROT ID:</b> P01903	
	<b>Full Name:</b> major histocompatibility complex, class II, DR alpha	
	<b>Calculated MW:</b> 254 aa, 29 kDa	

## Applications

**Tested Applications:**  
FC

**Species Specificity:**  
human

## Background Information

HLA-DR is a member of MHC class II molecules encoded by the human leukocyte antigen complex on the region 6p21.31 of chromosome 6. HLA-DR is composed of two non-covalently associated transmembrane glycoproteins (the  $\alpha$  and  $\beta$  chains), and is primarily expressed on B lymphocytes, monocytes, dendritic cells and thymic epithelial cells (PMID: 33125816). HLA-DR participate in the antigen presentation to CD4+ or CD8+ T cells and is postulated as a general biomarker of sepsis-induced immunosuppression (PMID: 28199206, 32421903).

## Storage

**Storage:**  
Store at 2-8°C. Avoid exposure to light. Stable for one year after shipment.

**Storage Buffer:**  
PBS with 0.09% sodium azide.

For technical support and original validation data for this product please contact:

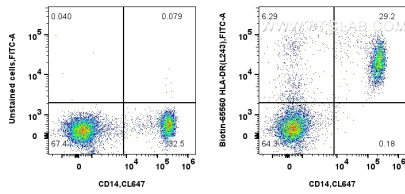
T: 4006900926

E: [Proteintech-CN@ptglab.com](mailto:Proteintech-CN@ptglab.com)

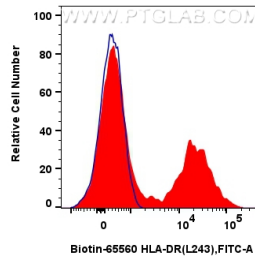
W: [ptgcn.com](http://ptgcn.com)

This product is exclusively available under Proteintech Group brand and is not available to purchase from any other manufacturer.

## Selected Validation Data



1x10<sup>6</sup> human PBMCs were surface stained with 5 ul Biotin Anti-Human HLA-DR (L243) Mouse IgG2a Recombinant Antibody (Biotin-65560, Clone: L243) and CoraLite®488-conjugated streptavidin, or unstained. Cells were co-stained with CoraLite® Plus 647 Anti-Human CD14. Cells were not fixed.



1x10<sup>6</sup> human PBMCs were surface stained with 5 ul Biotin Anti-Human HLA-DR (L243) Mouse IgG2a Recombinant Antibody (Biotin-65560, Clone: L243) and CoraLite®488-conjugated streptavidin (red), or unstained (blue). Cells were not fixed.