

For Research Use Only

# Biotin Anti-Human CD20 (2H7) Mouse IgG2a Recombinant Antibody

Catalog Number: Biotin-65575



## Basic Information

Catalog Number:

Biotin-65575

Size:

100ug, 500 µg/ml

Source:

Mouse

Isotype:

IgG2a

GenBank Accession Number:

BC002807

GeneID (NCBI):

931

Full Name:

membrane-spanning 4-domains, subfamily A, member 1

Calculated MW:

297 aa, 33 kDa

Purification Method:

Protein A purification

CloneNo.:

2H7

## Applications

Tested Applications:

FC

Species Specificity:

human

## Background Information

CD20 is a 33-37 kDa transmembrane phosphoprotein belonging to the membrane-spanning 4A family (PMID: 3260267; 16785532). CD20 is a B-lymphocyte surface molecule that is widely expressed during B-cell ontogeny, from early pre-B-cell developmental stages until final differentiation into plasma cells (PMID: 7524522). CD20 functions as calcium-permeable cation channel (PMID: 7684739). It is involved in the regulation of B-cell activation, proliferation and differentiation (PMID: 7524522).

## Storage

Storage:

Store at 2-8°C. Avoid exposure to light. Stable for one year after shipment.

Storage Buffer:

PBS with 0.09% sodium azide.

For technical support and original validation data for this product please contact:

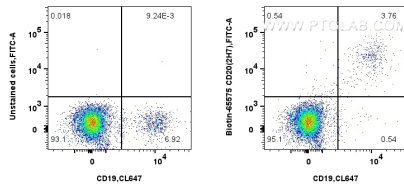
T: 4006900926

E: Proteintech-CN@ptglab.com

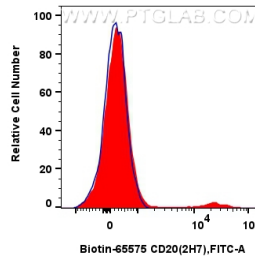
W: ptgcn.com

This product is exclusively available under Proteintech Group brand and is not available to purchase from any other manufacturer.

## Selected Validation Data



1x10<sup>6</sup> human PBMCs were surface stained with 0.25 ug Biotin Anti-Human CD20 (2H7) Mouse IgG2a Recombinant Antibody (Biotin-65575, Clone: 2H7) and CoraLite®488-conjugated streptavidin, or unstained. Cells were co-stained with CoraLite® Plus 647 Anti-Human CD19. Cells were not fixed. Lymphocytes were gated.



1x10<sup>6</sup> human PBMCs were surface stained with 0.25 ug Biotin Anti-Human CD20 (2H7) Mouse IgG2a Recombinant Antibody (Biotin-65575, Clone: 2H7) and CoraLite®488-conjugated streptavidin (red), or unstained (blue). Cells were not fixed. Lymphocytes were gated.