

For Research Use Only

Biotin Anti-Human CD62P (AK4) Mouse IgG2a Recombinant Antibody

Catalog Number: Biotin-65587



Basic Information

Catalog Number:

Biotin-65587

Concentration:

100ug, 500 µg/ml

Source:

Mouse

Isotype:

IgG2a

GenBank Accession Number:

BC028067

GeneID (NCBI):

6403

Full Name:

selectin P (granule membrane protein FC: 5 ul per 10⁶ cells in 100 µl suspension)

Calculated MW:

830 aa, 91 kDa

Purification Method:

Protein A purification

CloneNo.:

AK4

Recommended Dilutions:

Applications

Tested Applications:

FC

Species Specificity:

human

Positive Controls:

FC : Thrombin treated human peripheral blood platelets,

Background Information

P-selectin, also known as GMP140 or CD62P, is a transmembrane glycoprotein that mediates the interaction of activated endothelial cells or platelets with leukocytes. It is an adhesion molecule involved in the pathogenesis of inflammation, thrombosis, and oncogenesis. P-selectin is stored in the alpha-granules of platelets and Weibel-Palade bodies of endothelial cells. Upon cell activation by agonists, P-selectin is transported rapidly to the cell surface.

Storage

Storage:

Store at 2-8°C. Avoid exposure to light. Stable for one year after shipment.

Storage Buffer:

PBS with 0.09% sodium azide, pH7.3

For technical support and original validation data for this product please contact:

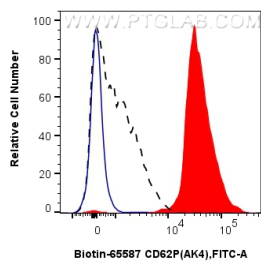
T: 4006900926

E: Proteintech-CN@ptglab.com

W: ptgcn.com

This product is exclusively available under Proteintech Group brand and is not available to purchase from any other manufacturer.

Selected Validation Data



1x10⁶ thrombin-treated human peripheral blood platelets were surface stained with 5 ul Biotin Plus Anti-Human CD62P (AK4) Mouse IgG2a RecAb (Biotin-65587, Clone: AK4) and CoraLite®488-conjugated streptavidin (red) or unstained cells (blue). 1x10⁶ untreated human peripheral blood platelets were surface stained with 5 ul Biotin Plus Anti-Human CD62P (AK4) Mouse IgG2a RecAb (Biotin-65587, Clone: AK4) and CoraLite®488-conjugated streptavidin (black, dashed). Cells