

For Research Use Only

Biotin-conjugated IgG Heavy chain Monoclonal antibody



Catalog Number: Biotin-67760

1 Publications

Basic Information

Catalog Number:

Biotin-67760

Size:

1000 µg/ml

Source:

Mouse

Isotype:

IgG2a

GenBank Accession Number:

GeneID (NCBI):

Full Name:

Calculated MW:

155 kDa

Observed MW:

~50 kDa

Purification Method:

Protein A purification

CloneNo.:

1C6B4

Recommended Dilutions:

WB 1:1000-1:6000

Applications

Tested Applications:

WB

Species Specificity:

Human

Positive Controls:

WB : human plasma,

Background Information

This antibody detects the heavy chain of human IgG.

Notable Publications

Author	Pubmed ID	Journal	Application
Liangyin Lv	36184689	Appl Microbiol Biotechnol	

Storage

Storage:

Store at -20°C. Avoid exposure to light.

Storage Buffer:

PBS with 50% Glycerol, 0.05% Proclin300, 0.5% BSA, pH 7.3.

Aliquoting is unnecessary for -20°C storage

For technical support and original validation data for this product please contact:

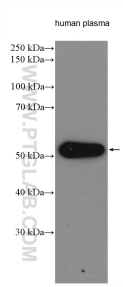
T: 4006900926

E: Proteintech-CN@ptglab.com

W: ptgcn.com

This product is exclusively available under Proteintech Group brand and is not available to purchase from any other manufacturer.

Selected Validation Data



human plasma were subjected to SDS PAGE followed by western blot with Biotin-67760 (Human IgG Heavy chain antibody) at dilution of 1:3000 incubated at room temperature for 1.5 hours.