

For Research Use Only

Biotin Anti-Human CD2 Rabbit Recombinant Antibody

Catalog Number: Biotin-98134



Basic Information

Catalog Number:

Biotin-98134

Size:

100ug, 500 μ g/ml

Source:

Rabbit

Isotype:

IgG

GenBank Accession Number:

BC033583

GeneID (NCBI):

914

ENSEMBL Gene ID:

ENSG00000116824

UNIPROT ID:

P06729

Full Name:

CD2 molecule

Calculated MW:

351 aa, 39 kDa

Purification Method:

Protein A purification

CloneNo.:

241222E2

Applications

Tested Applications:

FC

Species Specificity:

human

Background Information

CD2 is a cell surface glycoprotein present on a majority of thymocytes, all mature T cells and subset of NK cells but not on B lymphocytes. It is a pan T-cell marker. CD2 interacts with lymphocyte function-associated antigen (LFA-3/CD58) and CD48/BCM1 to mediate adhesion between T-cells and other cell types. CD2 is implicated in the triggering of T-cells, the cytoplasmic domain is implicated in the signaling function.

Storage

Storage:

Store at 2-8°C. Avoid exposure to light. Stable for one year after shipment.

Storage Buffer:

PBS with 0.09% sodium azide.

For technical support and original validation data for this product please contact:

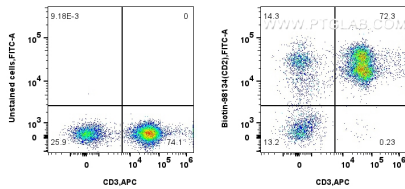
T: 4006900926

E: Proteintech-CN@ptglab.com

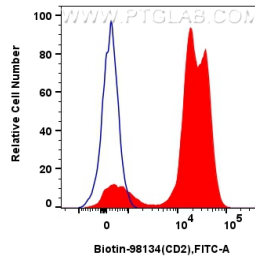
W: ptgcn.com

This product is exclusively available under Proteintech Group brand and is not available to purchase from any other manufacturer.

Selected Validation Data



1x10⁶ human PBMCs were surface stained with 0.25 ug Biotin Anti-Human CD2 Rabbit Recombinant Antibody (Biotin-98134, Clone: 241222E2) and Coralite®488-conjugated streptavidin, or unstained. Cells were then stained with APC Anti-Human CD3. Cells were not fixed. Lymphocytes were gated.



1x10⁶ human PBMCs were surface stained with 0.25 ug Biotin Anti-Human CD2 Rabbit Recombinant Antibody (Biotin-98134, Clone: 241222E2) and Coralite®488-conjugated streptavidin (red), or unstained (blue). Cells were not fixed. Lymphocytes were gated.