

For Research Use Only

# CoraLite® Plus 405 Anti-Human CD8a (Hit8a)



Catalog Number: **CL405-65113**

## Basic Information

<b>Catalog Number:</b> CL405-65113	<b>GenBank Accession Number:</b> BC025715	<b>Purification Method:</b> Affinity purification
<b>Size:</b> 100tests, 5 µl/test	<b>GeneID (NCBI):</b> 925	<b>CloneNo.:</b> Hit8a
<b>Source:</b> Mouse	<b>ENSEMBL Gene ID:</b> ENSG00000153563	<b>Excitation/Emission maxima wavelengths:</b> 399 nm / 422 nm
<b>Isotype:</b> IgG1, kappa	<b>UNIPROT ID:</b> P01732	
	<b>Full Name:</b> CD8a molecule	
	<b>Calculated MW:</b> 235 aa, 26 kDa	

## Applications

**Tested Applications:**  
FC

**Species Specificity:**  
Human

## Background Information

CD8 is a transmembrane glycoprotein composed of two disulfide-linked chains. It can be present as a homodimer of CD8 $\alpha$  or as a heterodimer of CD8 $\alpha$  and CD8 $\beta$  (PMID: 3264320; 8253791). CD8 is found on most thymocytes. The majority of class I-restricted T cells express mostly the CD8 $\alpha$  $\beta$  heterodimer while CD8 $\alpha$  $\alpha$  homodimers alone have been found on some gut intraepithelial T cells, on some T cell receptor (TCR)  $\gamma$  $\delta$  T cells and on NK cells (PMID: 2111591; 1831127; 8420975). CD8 acts as a co-receptor that binds to MHC class-I and participates in cytotoxic T cell activation (PMID: 8499079). During T cell development, CD8 is required for positive selection of CD4-/CD8+ T cells (PMID: 1968084).

## Storage

**Storage:**  
Store at 2-8°C. Avoid exposure to light. Stable for one year after shipment.

**Storage Buffer:**  
PBS with 0.09% sodium azide and 0.5% BSA.

For technical support and original validation data for this product please contact:

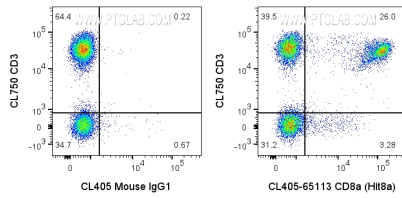
T: 4006900926

E: [Proteintech-CN@ptglab.com](mailto:Proteintech-CN@ptglab.com)

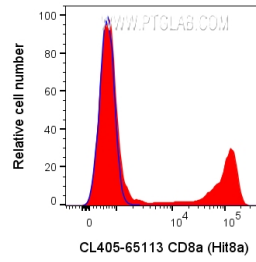
W: [ptgcn.com](http://ptgcn.com)

**This product is exclusively available under Proteintech Group brand and is not available to purchase from any other manufacturer.**

## Selected Validation Data



1x10<sup>6</sup> human PBMCs were surface stained with CL750 Anti-Human CD3 and 5 ul CoraLite® Plus 405 Anti-Human CD8a (CL405-65113, Clone:Hit8a), or CoraLite® Plus 405 Mouse IgG1 Isotype Control. Cells were not fixed. Lymphocytes were gated.



1x10<sup>6</sup> human PBMCs were surface stained with 5 ul CoraLite® Plus 405 Anti-Human CD8a (CL405-65113, Clone:Hit8a), or CoraLite® Plus 405 Mouse IgG1 Isotype Control. Cells were not fixed. Lymphocytes were gated.