

For Research Use Only

# CoraLite® Plus 405 Anti-Human CD20 (2H7) Mouse IgG2a Recombinant Antibody



Catalog Number: **CL405-65575**

## Basic Information

|                                       |  |   |
|---------------------------------------|--|---|
| <b>Catalog Number:</b><br>CL405-65575 | <b>GenBank Accession Number:</b><br>BC002807                               | <b>Purification Method:</b><br>Protein A purification                 |
| <b>Size:</b><br>100tests, 5 µl/test   | <b>GeneID (NCBI):</b><br>931   | <b>CloneNo.:</b><br>2H7   |
| <b>Source:</b><br>Mouse               | <b>Full Name:</b><br>membrane-spanning 4-domains,<br>subfamily A, member 1 | <b>Excitation/Emission maxima<br/>wavelengths:</b><br>399 nm / 422 nm |
| <b>Isotype:</b><br>IgG2a              | <b>Calculated MW:</b><br>297 aa, 33 kDa                                    |   |

## Applications

**Tested Applications:**  
FC

**Species Specificity:**  
human

## Background Information

CD20 is a 33-37 kDa transmembrane phosphoprotein belonging to the membrane-spanning 4A family (PMID: 3260267; 16785532). CD20 is a B-lymphocyte surface molecule that is widely expressed during B-cell ontogeny, from early pre-B-cell developmental stages until final differentiation into plasma cells (PMID: 7524522). CD20 functions as calcium-permeable cation channel (PMID: 7684739). It is involved in the regulation of B-cell activation, proliferation and differentiation (PMID: 7524522).

## Storage

**Storage:**  
Store at 2-8°C. Avoid exposure to light.  
**Storage Buffer:**  
PBS with 0.09% sodium azide and 0.5% BSA.

For technical support and original validation data for this product please contact:

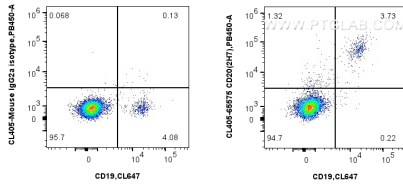
T: 4006900926

E: [Proteintech-CN@ptglab.com](mailto:Proteintech-CN@ptglab.com)

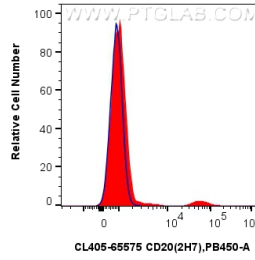
W: [ptgcn.com](http://ptgcn.com)

**This product is exclusively available under Proteintech Group brand and is not available to purchase from any other manufacturer.**

## Selected Validation Data



1x10<sup>6</sup> human PBMCs were surface stained with CoraLite® Plus 647 Anti-Human CD19 and 5 ul CoraLite® Plus 405 Anti-Human CD20 (2H7) Mouse IgG2a Recombinant Antibody (CL405-65575, Clone: 2H7) (right), or CoraLite® Plus 405 Mouse IgG2a Isotype Control (C1.18.4) (CL405-65208, Clone: C1.18.4) (left). Cells were not fixed. Lymphocytes were gated.



1x10<sup>6</sup> human PBMCs were surface stained with 5 ul CoraLite® Plus 405 Anti-Human CD20 (2H7) Mouse IgG2a Recombinant Antibody (CL405-65575, Clone: 2H7) (red), or CoraLite® Plus 405 Mouse IgG2a Isotype Control (C1.18.4) (CL405-65208, Clone: C1.18.4) (blue). Cells were not fixed. Lymphocytes were gated.