

For Research Use Only

# CoraLite® Plus 405 Anti-Rat CD11b (OX42) Mouse IgG2a Recombinant Antibody



Catalog Number: **CL405-65606**

## Basic Information

|                  |                           |   |
|------------------|---------------------------|---|
| Catalog Number:  | GenBank Accession Number: | Purification Method:                    |
| CL405-65606      | NM_012711                 | Protein A purification                  |
| Size:            | GeneID (NCBI):            | CloneNo.:                               |
| 100ug, 500 µg/ml | 25021                     | OX42                                    |
| Source:          | Full Name:                | Excitation/Emission maxima wavelengths: |
| Mouse            | integrin alpha M          | 399 nm / 422 nm                         |
| Isotype:         | Calculated MW:            |   |
| IgG2a            | 127 kDa                   |   |

## Applications

Tested Applications:

FC

Species Specificity:

rat

## Background Information

Integrins are cell adhesion receptors that are heterodimers composed of non-covalently associated  $\alpha$  and  $\beta$  subunits (PMID: 9779984). CD11b, also known as Integrin alpha M or CR3A, belongs to the integrin alpha chain family. CD11b forms an  $\alpha$  /  $\beta$  heterodimer with CD18 (integrin  $\beta$  2). CD11b/CD18 is implicated in various adhesive interactions of monocytes, macrophages and granulocytes as well as in mediating the uptake of complement-coated particles and pathogens (PMID: 9558116; 20008295). CD11b/CD18 is a receptor for the complement protein fragment iC3b, and is also a receptor for fibrinogen, factor X and ICAM1 (PMID: 2971974; 15485828).

## Storage

Storage:

Store at 2-8°C. Avoid exposure to light.

Storage Buffer:

PBS with 0.09% sodium azide.

For technical support and original validation data for this product please contact:

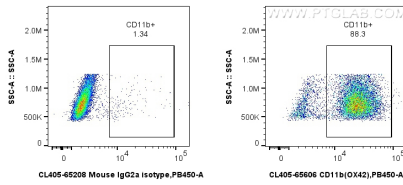
T: 4006900926

E: [Proteintech-CN@ptglab.com](mailto:Proteintech-CN@ptglab.com)

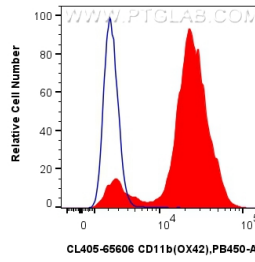
W: [ptgcn.com](http://ptgcn.com)

This product is exclusively available under Proteintech Group brand and is not available to purchase from any other manufacturer.

## Selected Validation Data



$1 \times 10^6$  rat bone marrow cells were surface stained with 0.25  $\mu$ g CoraLite® Plus 405 Anti-Rat CD11b (OX42) Mouse IgG2a Recombinant Antibody (CL405-65606, Clone: OX42), or CoraLite® Plus 405 Mouse IgG2a Isotype Control (C1.18.4) (CL405-65208, Clone: C1.18.4). Cells were not fixed.



$1 \times 10^6$  rat bone marrow cells were surface stained with 0.25  $\mu$ g CoraLite® Plus 405 Anti-Rat CD11b (OX42) Mouse IgG2a Recombinant Antibody (CL405-65606, Clone: OX42) (red), or CoraLite® Plus 405 Mouse IgG2a Isotype Control (C1.18.4) (CL405-65208, Clone: C1.18.4) (blue). Cells were not fixed.