

For Research Use Only

# CoraLite® Plus 405 Anti-Human CTLA-4/CD152 Rabbit Recombinant Antibody

Catalog Number: CL405-98078



## Basic Information

Catalog Number:

CL405-98078

Size:

100tests, 5 ul/test

Source:

Rabbit

Isotype:

IgG

GenBank Accession Number:

BC070162

GeneID (NCBI):

1493

UNIPROT ID:

P16410

Full Name:

cytotoxic T-lymphocyte-associated protein 4

Calculated MW:

223 aa, 25 kDa

Purification Method:

Protein A purification

CloneNo.:

240793E8

Excitation/Emission maxima wavelengths:

399 nm / 422 nm

## Applications

Tested Applications:

FC

Species Specificity:

human

## Background Information

CTLA-4, also known as CD152, belonging to the immunoglobulin superfamily, is primarily found on activated T cells and regulatory T cells (Tregs). CTLA-4 is closely related to the T-cell costimulatory CD28, and both molecules bind to B7-1 and B7-2 on antigen-presenting cells. CTLA-4 acts as a negative regulatory molecule of T-cell responses.

## Storage

Storage:

Store at 2-8°C. Avoid exposure to light. Stable for one year after shipment.

Storage Buffer:

PBS with 0.09% sodium azide and 0.5% BSA.

For technical support and original validation data for this product please contact:

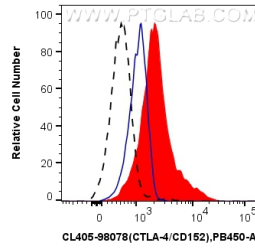
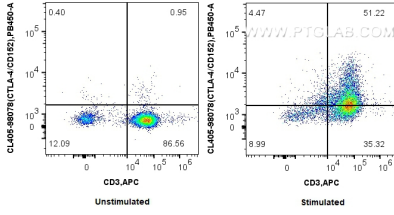
T: 4006900926

E: [Proteintech-CN@ptglab.com](mailto:Proteintech-CN@ptglab.com)

W: [ptgcn.com](http://ptgcn.com)

This product is exclusively available under Proteintech Group brand and is not available to purchase from any other manufacturer.

## Selected Validation Data



1x10<sup>6</sup> unstimulated or PHA stimulated human PBMCs were surface stained with APC Anti-Human CD3 and 5 ul CoraLite® Plus 405 Anti-Human CTLA-4/CD152 Rabbit Recombinant Antibody (CL405-98078, Clone:240793E8). Cells were not fixed.

1x10<sup>6</sup> PHA stimulated human PBMCs were surface stained with 5 ul CoraLite® Plus 405 Anti-Human CTLA-4/CD152 Rabbit Recombinant Antibody (CL405-98078, Clone:240793E8) (red), or CoraLite® Plus 405 Rabbit IgG Isotype Control Recombinant Antibody (CL405-98136, Clone: 240953C9) (blue). 1x10<sup>6</sup> unstimulated human PBMCs were stained with 5 ul CoraLite® Plus 405 Anti-Human CTLA-4/CD152 Rabbit Recombinant Antibody (CL405-98078,

