

For Research Use Only

# CoraLite® Plus 405 Anti-Human CD22 Rabbit Recombinant Antibody

Catalog Number: CL405-98092



## Basic Information

Catalog Number:

CL405-98092

Concentration:

100tests, 5 ul/test

Source:

Rabbit

Isotype:

IgG

GenBank Accession Number:

BC109306

GeneID (NCBI):

933

UNIPROT ID:

P20273

Full Name:

CD22 molecule

Calculated MW:

847 aa, 95 kDa

Purification Method:

Protein A purification

CloneNo.:

241315A1

Excitation/Emission maxima

wavelengths:

399 nm / 422 nm

## Applications

Tested Applications:

FC

Species Specificity:

human

## Background Information

CD22, also known as Siglec-2 (sialic acid binding Ig-like lectin 2) or BL-CAM (B-lymphocyte cell adhesion molecule), is a 130-140 kDa, B-cell restricted, type I transmembrane glycoprotein belonging to the immunoglobulin gene superfamily. The expression of CD22 is developmentally regulated. It is expressed at low levels in the cytoplasm of pro-B and pre-B cells and present on the cell surface only at mature stages of B-cell differentiation. Cell surface expression is lost during terminal differentiation into plasma cell and after B-cell activation. CD22 is an inhibitory receptor for B-cell receptor (BCR) signalling, preferentially binds to alpha-2,6-linked sialic acid and mediates B-cell B-cell interactions. It plays a crucial role in activation and differentiation of the B-cell.

## Storage

Storage:

Store at 2-8°C. Avoid exposure to light. Stable for one year after shipment.

Storage Buffer:

PBS with 0.09% sodium azide and 0.5% BSA.

For technical support and original validation data for this product please contact:

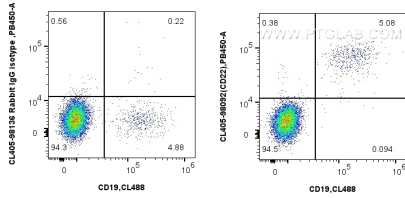
T: 4006900926

E: [Proteintech-CN@ptglab.com](mailto:Proteintech-CN@ptglab.com)

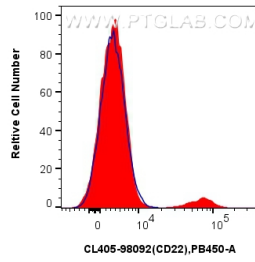
W: [ptgcn.com](http://ptgcn.com)

This product is exclusively available under Proteintech Group brand and is not available to purchase from any other manufacturer.

## Selected Validation Data



1x10<sup>6</sup> human PBMCs were surface stained with 5 ul CoraLite® Plus 405 Anti-Human CD22 Rabbit RecAb (CL405-98092, Clone:241315A1) or CoraLite® Plus 405 Rabbit IgG Isotype Control RecAb (CL405-98136, Clone: 240953C9), and 5 ul CoraLite® Plus 488 Anti-Human CD19 (4G7) Mouse IgG2a Recombinant Antibody (CL488-65562, Clone: 4G7). Cells were not fixed.



1x10<sup>6</sup> human PBMCs were surface stained with 5 ul CoraLite® Plus 405 Anti-Human CD22 Rabbit RecAb (CL405-98092, Clone:241315A1) (red) or CoraLite® Plus 405 Rabbit IgG Isotype Control RecAb (CL405-98136, Clone: 240953C9) (blue). Cells were not fixed.