

For Research Use Only

# CoraLite® Plus 405 Rabbit IgG Isotype Control Recombinant Antibody

Catalog Number: CL405-98136



## Basic Information

Catalog Number:

CL405-98136

Size:

100ug, 500 µg/ml

Source:

Rabbit

Isotype:

IgG

GenBank Accession Number:

GeneID (NCBI):

Full Name:

Purification Method:

Protein A purification

CloneNo.:

240953C9

Excitation/Emission maxima wavelengths:

399 nm / 422 nm

## Applications

Tested Applications:

FC

Species Specificity:

n/a

## Background Information

This product is an isotype control antibody, which is used to estimate the non-specific binding of target primary antibodies due to Fc receptor binding or other protein-protein interactions. An isotype control antibody should have the same immunoglobulin type and be used at the same concentration as the test antibody.

## Storage

Storage:

Store at 2-8°C. Avoid exposure to light. Stable for one year after shipment.

Storage Buffer:

PBS with 0.09% sodium azide.

For technical support and original validation data for this product please contact:

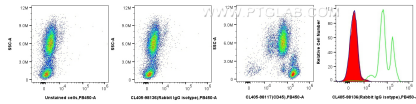
T: 4006900926

E: [Proteintech-CN@ptglab.com](mailto:Proteintech-CN@ptglab.com)

W: [ptgcn.com](http://ptgcn.com)

**This product is exclusively available under Proteintech Group brand and is not available to purchase from any other manufacturer.**

## Selected Validation Data



1x10<sup>6</sup> human peripheral blood leukocytes were unstained (left, blue in histogram) or surface stained with 0.25 ug CoraLite® Plus 405 Rabbit IgG Isotype Control Recombinant Antibody (CL405-98136, Clone: 240953C9) (mid, red in histogram), or 0.25 ug CoraLite® Plus 405 Anti-Human CD45 Rabbit Recombinant Antibody (CL405-98117, Clone: 241670E10) (right, green in histogram). Cells were incubated with FC Receptor Block prior to staining. Cells were not fixed.

