

For Research Use Only

FcZero-rAb® CoraLite® Plus 405 Anti-Human CD16 (3G8) Rabbit Recombinant Antibody



Catalog Number: CL405-FcA65612

Basic Information

Catalog Number:

CL405-FcA65612

Concentration:

100 tests, 5 ul/test

Source:

Rabbit

Isotype:

IgG

GenBank Accession Number:

BC017865

GeneID (NCBI):

2214

ENSEMBL Gene ID:

ENSG00000203747

UNIPROT ID:

P08637

Full Name:

Fc fragment of IgG, low affinity IIIa, receptor (CD16a)

Calculated MW:

254 aa, 29 kDa

Purification Method:

Protein A purification

CloneNo.:

3G8

Recommended Dilutions:

FC: 5 ul per 10^6 cells in a 100 μ l suspension

Excitation/Emission maximum wavelengths:

399 nm / 422 nm

Applications

Tested Applications:

FC

Species Specificity:

human, monkey, non-human primates

Positive Controls:

FC : human PBMCs,

Background Information

CD16 is a 50-70-kDa low affinity Fc receptor found on the surface of natural killer cells, neutrophil polymorphonuclear leukocytes, monocytes and macrophages. CD16 mediates antibody-dependent cellular cytotoxicity (ADCC) and other antibody-dependent responses, such as phagocytosis. CD16 has been identified as Fc receptors Fc γ RIIIa (CD16a) and Fc γ RIIIb (CD16b), encoded by two nearly identical genes, FCGR3A and the FCGR3B. Clone 3G8 recognizes both the CD16a and CD16b (PMID: 7592758).

Storage

Storage:

Store at 2-8°C. Avoid exposure to light. Stable for one year after shipment.

Storage Buffer:

PBS with 0.09% sodium azide and 0.5% BSA, pH7.3

For technical support and original validation data for this product please contact:

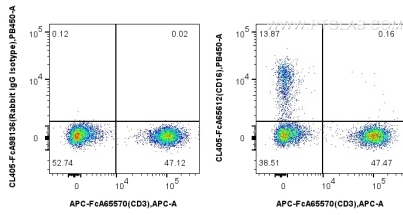
T: 4006900926

E: Proteintech-CN@ptglab.com

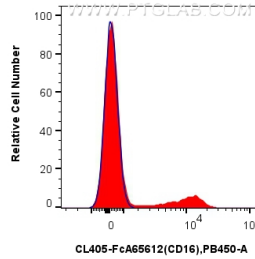
W: ptgcn.com

This product is exclusively available under Proteintech Group brand and is not available to purchase from any other manufacturer.

Selected Validation Data



1x10⁶ human PBMCs were surface stained with FcZero-rAb@ APC Anti-Human CD3 (UCHT1), and 5 ul CoraLite® Plus 405 Anti-Human CD16 (3G8) Rabbit RecAb (CL405-FcA65612, Clone: 3G8) or FcZero-rAb@ CoraLite® Plus 405 Rabbit IgG Isotype Control Recombinant Antibody (CL405-FcA98136, Clone: 240953C9). Cells were not fixed.



1x10⁶ human PBMCs were surface stained with 5 ul CoraLite® Plus 405 Anti-Human CD16 (3G8) Rabbit RecAb (CL405-FcA65612, Clone: 3G8) (red) or FcZero-rAb@ CoraLite® Plus 405 Rabbit IgG Isotype Control Recombinant Antibody (CL405-FcA98136, Clone: 240953C9) (blue). Cells were not fixed.