

For Research Use Only

CoraLite® Plus 488-conjugated Cytokeratin 15 Polyclonal antibody

Catalog Number:CL488-10137



Basic Information

Catalog Number:

CL488-10137

Source:

Rabbit

Isotype:

IgG

Immunogen Catalog Number:

AG0185

GenBank Accession Number:

BC002641

GeneID (NCBI):

3866

UNIPROT ID:

P19012

Full Name:

keratin 15

Calculated MW:

49 kDa

Observed MW:

49 kDa

Purification Method:

Antigen affinity Purification

Recommended Dilutions:

IF/ICC: 1:50-1:500

Excitation/Emission maxima
wavelengths:

493 nm / 522 nm

Applications

Tested Applications:

IF/ICC

Species Specificity:

human

Positive Controls:

IF/ICC : A431 cells, HeLa cells

Background Information

Keratins are a large family of proteins that form the intermediate filament cytoskeleton of epithelial cells, which are classified into two major sequence types. Type I keratins are a group of acidic intermediate filament proteins, including K9-K23, and the hair keratins Ha1-Ha8. Type II keratins are the basic or neutral counterparts to the acidic type I keratins, including K1-K8, and the hair keratins, Hb1-Hb6. Keratin 15 is a type I cytokeratin. It is found in some progenitor basal cells within complex epithelia.

Storage

Storage:

Store at -20°C. Avoid exposure to light. Stable for one year after shipment.

Storage Buffer:

PBS with 50% glycerol, 0.05% Proclin300, 0.5% BSA, pH7.3

Aliquoting is unnecessary for -20°C storage

For technical support and original validation data for this product please contact:

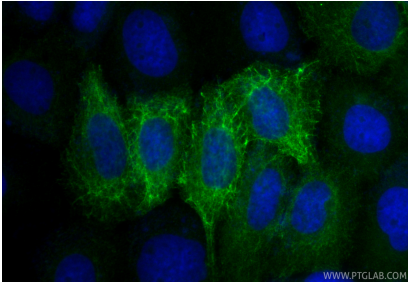
T: 4006900926

E: Proteintech-CN@ptglab.com

W: ptgcn.com

This product is exclusively available under Proteintech Group brand and is not available to purchase from any other manufacturer.

Selected Validation Data



Immunofluorescent analysis of (-20°C Methanol) fixed A431 cells using Coralite® Plus 488 CytoKeratin 15 antibody (CL488-10137) at dilution of 1:200.