

For Research Use Only

CoraLite® Plus 488-conjugated STOML2 Polyclonal antibody



Catalog Number: CL488-10348

Featured Product

Basic Information

Catalog Number:

CL488-10348

Size:

1000 µg/ml

Source:

Rabbit

Isotype:

IgG

Immunogen Catalog Number:

AG0363

GenBank Accession Number:

BC002442

GeneID (NCBI):

30968

UNIPROT ID:

Q9UJZ1

Full Name:

stomatin (EPB72)-like 2

Calculated MW:

356 aa, 39 kDa

Observed MW:

39 kDa

Purification Method:

Antigen affinity purification

Recommended Dilutions:

IF/ICC 1:50-1:500

Excitation/Emission maxima
wavelengths:

493 nm / 522 nm

Applications

Tested Applications:

IF/ICC

Species Specificity:

human, mouse, rat

Positive Controls:

IF/ICC : HeLa cells,

Background Information

STOML2 (Stomatin-like protein 2; also known as SLP-2) is a widely expressed mitochondrial member of the highly conserved family of stomatin proteins. STOML2 is localized mostly in mitochondrial inner membrane, minor in plasma membrane. Human STOML2 interacts with prohibitins and regulates mitochondrial biogenesis and function (21746876). In addition, plenty of studies revealed that STOML2 was overexpressed in many human cancer tissues, and its expression may be a new valuable prognostic biomarker (19839737, 21960069). Recently STOML2 has been identified as a serological biomarker for early colorectal cancer (CRC) diagnosis (21209152). Two isoforms of STOML2 exist due to the alternative splicing, with MW of 39 kDa and 33 kDa, respectively.

Storage

Storage:

Store at -20°C. Avoid exposure to light. Stable for one year after shipment.

Storage Buffer:

PBS with 50% Glycerol, 0.05% Proclin300, 0.5% BSA, pH 7.3.

Aliquoting is unnecessary for -20°C storage

For technical support and original validation data for this product please contact:

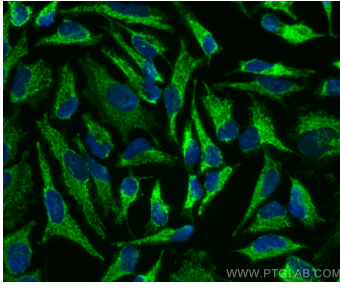
T: 4006900926

E: Proteintech-CN@ptglab.com

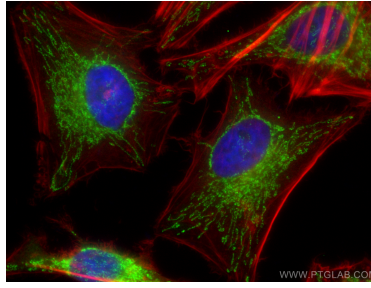
W: ptgcn.com

This product is exclusively available under Proteintech Group brand and is not available to purchase from any other manufacturer.

Selected Validation Data



Immunofluorescent analysis of (4% PFA) fixed HeLa cells using CoraLite® Plus 488 STOML2 antibody (CL488-10348) at dilution of 1:200.



Immunofluorescent analysis of (4% PFA) fixed HeLa cells using CoraLite® Plus 488 STOML2 antibody (CL488-10348) at dilution of 1:200, CL594-Phalloidin (red).