

For Research Use Only

CoraLite® Plus 488-conjugated ENOX2 Polyclonal antibody



Catalog Number: CL488-10423

Featured Product

Basic Information

Catalog Number:

CL488-10423

Size:

1000 µg/ml

Source:

Rabbit

Isotype:

IgG

Immunogen Catalog Number:

AG0674

GenBank Accession Number:

BC019254

GeneID (NCBI):

10495

UNIPROT ID:

Q16206

Full Name:

ecto-NOX disulfide-thiol exchanger 2

Calculated MW:

70 kDa

Observed MW:

70 kDa

Purification Method:

Antigen affinity purification

Recommended Dilutions:

IF/ICC 1:50-1:500

Excitation/Emission maxima wavelengths:

493 nm / 522 nm

Applications

Tested Applications:

IF/ICC, FC (Intra)

Species Specificity:

human, mouse

Positive Controls:

IF/ICC : MCF-7 cells,

Background Information

Tumor-associated NADH oxidase (ENOX2) as a member of a family of growth-related NADH (or hydroquinone) oxidases. It functions as a terminal oxidase of plasma electron transport from cytosolic NAD(P)H via hydroquinones to acceptors at the cell surface. Hydroquinone oxidase activity alternates with a protein disulfide-thiol interchange/oxidoreductase activity which may control physical membrane displacements associated with vesicle budding or cell enlargement. The activities oscillate with a period length of 22 minutes and play a role in control of the ultradian cellular biological clock

Storage

Storage:

Store at -20°C. Avoid exposure to light. Stable for one year after shipment.

Storage Buffer:

PBS with 50% Glycerol, 0.05% Proclin300, 0.5% BSA, pH 7.3.

Aliquoting is unnecessary for -20°C storage

For technical support and original validation data for this product please contact:

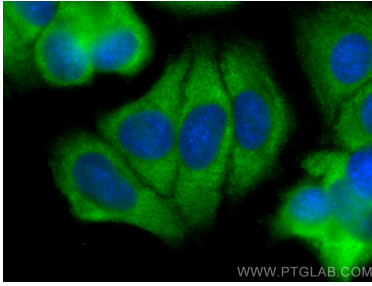
T: 4006900926

E: Proteintech-CN@ptglab.com

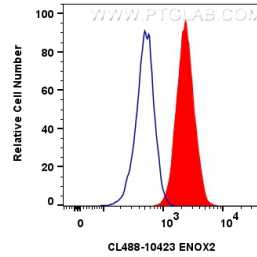
W: ptgcn.com

This product is exclusively available under Proteintech Group brand and is not available to purchase from any other manufacturer.

Selected Validation Data



Immunofluorescent analysis of (-20°C Methanol) fixed MCF-7 cells using CoraLite® Plus 488 ENOX2 antibody (CL488-10423) at dilution of 1:200.



1x10⁶ MCF-7 cells were intracellularly stained with 0.8 ug CoraLite® Plus 488-conjugated ENOX2 Polyclonal antibody (CL488-10423)(red), or 0.8 ug CoraLite® Plus 488-conjugated Rabbit IgG control Rabbit PolyAb (CL488-30000) (blue). Cells were fixed with 4% PFA and permeabilized with Flow Cytometry Perm Buffer (PF00011-C).