

CoraLite® Plus 488-conjugated DACH1 Polyclonal antibody

Catalog Number: **CL488-10914**

Basic Information

Catalog Number: CL488-10914	GenBank Accession Number: BC021219	Purification Method: Antigen affinity purification
Size: 1000 µg/ml	GeneID (NCBI): 1602	Recommended Dilutions: IF 1:50-1:500
Source: Rabbit	UNIPROT ID: Q9UI36	Excitation/Emission maxima wavelengths: 493 nm / 522 nm
Isotype: IgG	Full Name: dachshund homolog 1 (Drosophila)	
Immunogen Catalog Number: AG1354	Calculated MW: 79 kDa	

Applications

Tested Applications: IF/ICC	Positive Controls: IF : HEK-293 cells,
Species Specificity: human	

Background Information

DACH1, a homologue of the *Drosophila* dachshund gene, is a key regulator of cell fate determination during eye, leg, and brain development in the fly. Through interacting with NCoR and Smad4, DACH1 is able to inhibit the transforming growth factor-beta (TGF-beta) signaling pathway. DACH1 can inhibit breast cancer cellular proliferation via cyclin D1, suggesting a possible role in tumor suppression. Additionally, DACH1 plays an important role in negative regulation of RANKL (Receptor activator of NF-kappaB ligand) gene expression in marrow stromal/preosteoblast cells, and loss of DACH1 expression might be involved in endometrial cancer progression. Four isoforms of DACH1 are produced by alternative splicing. This antibody is a rabbit polyclonal antibody raised against residues near the C terminus of human DACH1.

Storage

Storage:
Store at -20°C. Avoid exposure to light.
Storage Buffer:
PBS with 50% Glycerol, 0.05% Proclin300, 0.5% BSA, pH 7.3.
Aliquoting is unnecessary for -20°C storage

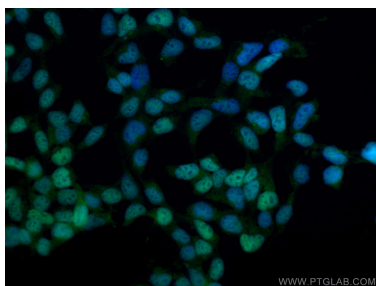
For technical support and original validation data for this product please contact:

T: 4006900926

E: Proteintech-CN@ptglab.comW: ptgcn.com

This product is exclusively available under Proteintech Group brand and is not available to purchase from any other manufacturer.

Selected Validation Data



Immunofluorescent analysis of (4% PFA) fixed HEK-293 cells using CoraLite® Plus 488 DACH1 antibody (CL488-10914) at dilution of 1:200.