

For Research Use Only

CoraLite® Plus 488-conjugated NDOR1/NR1 Polyclonal antibody



Catalog Number: **CL488-11404**

Basic Information

Catalog Number:

CL488-11404

Size:

1000 µg/ml

Source:

Rabbit

Isotype:

IgG

Immunogen Catalog Number:

AG1909

GenBank Accession Number:

BC015735

GeneID (NCBI):

27158

UNIPROT ID:

Q9UHB4

Full Name:

NADPH dependent diflavin
oxidoreductase 1

Calculated MW:

606 aa, 68 kDa

Observed MW:

62 kDa

Purification Method:

Antigen affinity purification

Recommended Dilutions:

IF 1:50-1:500

Excitation/Emission maxima
wavelengths:

493 nm / 522 nm

Applications

Tested Applications:

IF/ICC

Species Specificity:

human, mouse, rat

Positive Controls:

IF : HeLa cells,

Background Information

Storage

Storage:

Store at -20°C. Avoid exposure to light. Stable for one year after shipment.

Storage Buffer:

PBS with 50% Glycerol, 0.05% Proclin300, 0.5% BSA, pH 7.3.

Aliquoting is unnecessary for -20°C storage

For technical support and original validation data for this product please contact:

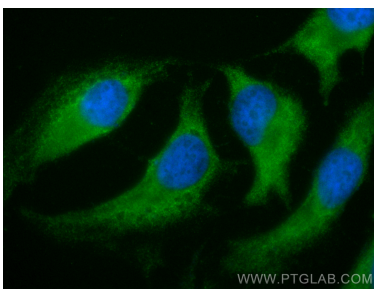
T: 4006900926

E: Proteintech-CN@ptglab.com

W: ptgcn.com

This product is exclusively available under Proteintech Group brand and is not available to purchase from any other manufacturer.

Selected Validation Data



Immunofluorescent analysis of (-20°C Methanol) fixed HeLa cells using Coralite® Plus 488 NDOR1/NR1 antibody (CL488-11404) at dilution of 1:200.