

For Research Use Only

CoraLite® Plus 488-conjugated TWF1 Polyclonal antibody



Catalog Number: CL488-11732

Featured Product

Basic Information

Catalog Number:

CL488-11732

Size:

1000 µg/ml

Source:

Rabbit

Isotype:

IgG

Immunogen Catalog Number:

AG2332

GenBank Accession Number:

BC022344

GeneID (NCBI):

5756

UNIPROT ID:

Q12792

Full Name:

twinfilin, actin-binding protein,
homolog 1 (Drosophila)

Calculated MW:

368 aa, 42 kDa

Observed MW:

42 kDa

Purification Method:

Antigen affinity purification

Recommended Dilutions:

IF/ICC 1:50-1:500

Excitation/Emission maxima
wavelengths:

493 nm / 522 nm

Applications

Tested Applications:

IF/ICC

Species Specificity:

human, mouse, rat

Positive Controls:

IF/ICC : HeLa cells,

Background Information

Storage

Storage:

Store at -20°C. Avoid exposure to light. Stable for one year after shipment.

Storage Buffer:

PBS with 50% Glycerol, 0.05% Proclin300, 0.5% BSA, pH 7.3.

Aliquoting is unnecessary for -20°C storage

For technical support and original validation data for this product please contact:

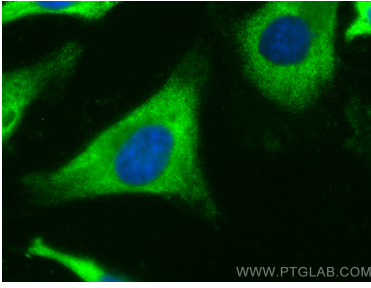
T: 4006900926

E: Proteintech-CN@ptglab.com

W: ptgcn.com

This product is exclusively available under Proteintech Group brand and is not available to purchase from any other manufacturer.

Selected Validation Data



Immunofluorescent analysis of (-20°C Methanol) fixed HeLa cells using CoraLite® Plus 488 TWF 1 antibody (CL488-11732) at dilution of 1:200.