

For Research Use Only

# CoraLite® Plus 488-conjugated MAGEB1 Polyclonal antibody



Catalog Number: CL488-12400

## Basic Information

Catalog Number:

CL488-12400

Size:

1000 µg/ml

Source:

Rabbit

Isotype:

IgG

Immunogen Catalog Number:

AG3094

GenBank Accession Number:

BC013772

GeneID (NCBI):

4112

UNIPROT ID:

P43366

Full Name:

melanoma antigen family B, 1

Calculated MW:

347 aa, 39 kDa

Observed MW:

43-45 kDa

Purification Method:

Antigen affinity purification

Recommended Dilutions:

IF/ICC 1:50-1:500

Excitation/Emission maxima  
wavelengths:

493 nm / 522 nm

## Applications

Tested Applications:

IF/ICC, FC (Intra)

Species Specificity:

human

Positive Controls:

IF/ICC : HepG2 cells,

## Background Information

MAGEB1, also named as MAGEL1, MAGEXP, DAM10 and CT3.1, is a member of the MAGEB gene family. MAGE genes encode for tumor-rejection antigens and are expressed in tumors of different histologic types and Testis/placenta, but not in other normal tissues. The MW of MAGEB1 is about 40-45kd.

## Storage

Storage:

Store at -20°C. Avoid exposure to light. Stable for one year after shipment.

Storage Buffer:

PBS with 50% Glycerol, 0.05% Proclin300, 0.5% BSA, pH 7.3.

Aliquoting is unnecessary for -20°C storage

For technical support and original validation data for this product please contact:

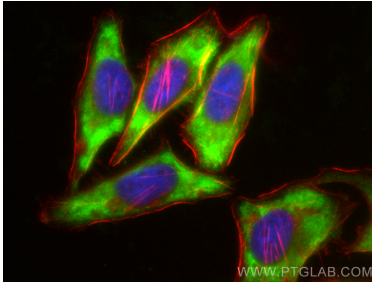
T: 4006900926

E: [Proteintech-CN@ptglab.com](mailto:Proteintech-CN@ptglab.com)

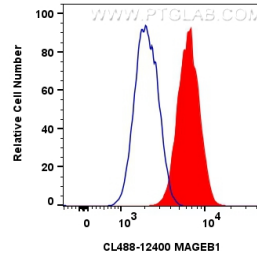
W: [ptgcn.com](http://ptgcn.com)

**This product is exclusively available under Proteintech Group brand and is not available to purchase from any other manufacturer.**

## Selected Validation Data



Immunofluorescent analysis of (-20°C Ethanol) fixed HepG2 cells using CoraLite® Plus 488 MAGEB1 antibody (CL488-12400) at dilution of 1:200, CL594-Phalloidin (red).



1x10<sup>6</sup> HepG2 cells were intracellularly stained with 0.8 ug CoraLite® Plus 488 Mageb1 Polyclonal Antibody (CL488-12400)(red), or 0.8 ug CoraLite® Plus 488-conjugated Rabbit IgG control Rabbit PolyAb (CL488-30000) (blue). Cells were fixed with 4% PFA and permeabilized with Flow Cytometry Perm Buffer (PF00011-C).