

For Research Use Only

# CoraLite® Plus 488-conjugated PPP1R12B Polyclonal antibody



Catalog Number: CL488-13366

## Basic Information

Catalog Number:

CL488-13366

Size:

1000 µg/ml

Source:

Rabbit

Isotype:

IgG

Immunogen Catalog Number:

AG4185

GenBank Accession Number:

BC034430

GeneID (NCBI):

4660

UNIPROT ID:

O60237

Full Name:

protein phosphatase 1, regulatory  
(inhibitor) subunit 12B

Calculated MW:

982 aa, 110 kDa

Observed MW:

110 kDa

Purification Method:

Antigen affinity purification

Recommended Dilutions:

IF/ICC 1:50-1:500

Excitation/Emission maxima  
wavelengths:

493 nm / 522 nm

## Applications

Tested Applications:

IF/ICC

Species Specificity:

human, mouse, rat

Positive Controls:

IF/ICC : NIH/3T3 cells,

## Background Information

### Storage

Storage:

Store at -20°C. Avoid exposure to light. Stable for one year after shipment.

Storage Buffer:

PBS with 50% Glycerol, 0.05% Proclin300, 0.5% BSA, pH 7.3.

Aliquoting is unnecessary for -20°C storage

For technical support and original validation data for this product please contact:

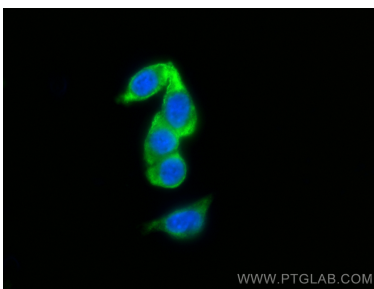
T: 4006900926

E: [Proteintech-CN@ptglab.com](mailto:Proteintech-CN@ptglab.com)

W: [ptgcn.com](http://ptgcn.com)

This product is exclusively available under Proteintech Group brand and is not available to purchase from any other manufacturer.

## Selected Validation Data



Immunofluorescent analysis of (-20°C Ethanol) fixed NIH/3T3 cells using CoraLite® Plus 488 PPP1R12B antibody (CL488-13366) at dilution of 1:200.