

For Research Use Only

# CoraLite® Plus 488-conjugated Talin-1 Polyclonal antibody



Catalog Number: CL488-14168

Featured Product

## Basic Information

Catalog Number:

CL488-14168

Size:

1000 µg/ml

Source:

Rabbit

Isotype:

IgG

Immunogen Catalog Number:

AG5367

GenBank Accession Number:

BC042923

GeneID (NCBI):

7094

UNIPROT ID:

Q9Y490

Full Name:

talin 1

Calculated MW:

2541 aa, 270 kDa

Observed MW:

270 kDa, 230 kDa

Purification Method:

Antigen affinity purification

Recommended Dilutions:

IF/ICC 1:50-1:500

Excitation/Emission maxima  
wavelengths:

493 nm / 522 nm

## Applications

Tested Applications:

IF/ICC, FC (Intra)

Species Specificity:

human, mouse, rat

Positive Controls:

IF/ICC : A549 cells,

## Background Information

Talin-1 is a large cytoskeletal protein consisting of a globular head domain and a long rod comprised of a series of  $\alpha$ -helical bundles (PMID: 35266014). Talin-1 is ubiquitously expressed and is a major component of focal adhesions which are multi-protein, integrin-containing complexes, mediating cell migration, adhesion and integrin signalling (PMID: 33431906). Talin-1 also plays a role in tumor formation, migration and metastasis in various malignancies (PMID: 37013489).

## Storage

Storage:

Store at -20°C. Avoid exposure to light. Stable for one year after shipment.

Storage Buffer:

PBS with 50% Glycerol, 0.05% Proclin300, 0.5% BSA, pH 7.3.

Aliquoting is unnecessary for -20°C storage

For technical support and original validation data for this product please contact:

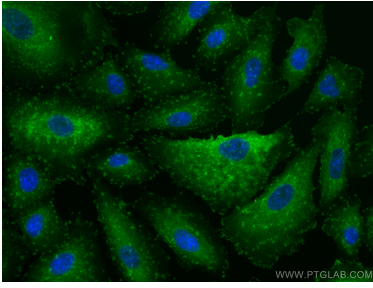
T: 4006900926

E: [Proteintech-CN@ptglab.com](mailto:Proteintech-CN@ptglab.com)

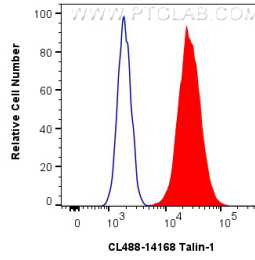
W: [ptgcn.com](http://ptgcn.com)

This product is exclusively available under Proteintech Group brand and is not available to purchase from any other manufacturer.

## Selected Validation Data



Immunofluorescent analysis of (4% PFA) fixed A549 cells using CoraLite® Plus 488 Talin-1 antibody (CL488-14168) at dilution of 1:200.



1x10<sup>6</sup> HeLa cells were intracellularly stained with 0.8 ug CoraLite® Plus 488 Anti-Human Talin-1 (CL488-14168) (red), or 0.8 ug Isotype Control. Cells were fixed with 4% PFA and permeabilized with Flow Cytometry Perm Buffer (PF00011-C).