

For Research Use Only

# CoraLite® Plus 488-conjugated ACTN2 Polyclonal antibody



Catalog Number: CL488-14221

## Basic Information

Catalog Number:

CL488-14221

Size:

1000 µg/ml

Source:

Rabbit

Isotype:

IgG

Immunogen Catalog Number:

AG5459

GenBank Accession Number:

BC051770

GeneID (NCBI):

88

UNIPROT ID:

P35609

Full Name:

actinin, alpha 2

Calculated MW:

104 kDa

Observed MW:

103 kDa

Purification Method:

Antigen affinity purification

Recommended Dilutions:

IF 1:50-1:500

Excitation/Emission maxima  
wavelengths:

493 nm / 522 nm

## Applications

Tested Applications:

IF/ICC, IF-P

Species Specificity:

human, mouse, rat

Positive Controls:

IF : mouse heart tissue, H9C2 cells

## Background Information

Alpha actinin 2 (ACTN2) belongs to the alpha-actinin family and is expressed in both skeletal and cardiac muscles and functions to anchor myofibrillar actin thin filaments and titin to Z-discs (PMID: 30701273). ACTN2 is an actin-binding protein with multiple roles in different cell types. In nonmuscle cells, the cytoskeletal isoform is found along microfilament bundles and adherens-type junctions, where it is involved in binding actin to the membrane. In contrast, skeletal, cardiac, and smooth muscle isoforms are localized to the Z disc and analogous dense bodies, where they help anchor the myofibrillar actin filaments. Mutations in ACTN2 are associated with hypertrophic cardiomyopathy, as well as dilated cardiomyopathy and endocardial fibroelastosis (PMID: 20022194, 14567970).

## Storage

Storage:

Store at -20°C. Avoid exposure to light. Stable for one year after shipment.

Storage Buffer:

PBS with 50% Glycerol, 0.05% Proclin300, 0.5% BSA, pH 7.3.

Aliquoting is unnecessary for -20°C storage

For technical support and original validation data for this product please contact:

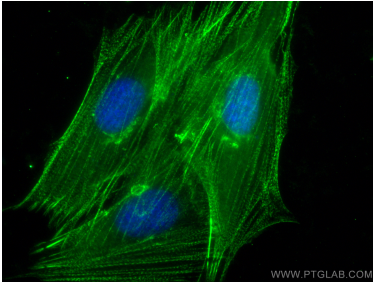
T: 4006900926

E: [Proteintech-CN@ptglab.com](mailto:Proteintech-CN@ptglab.com)

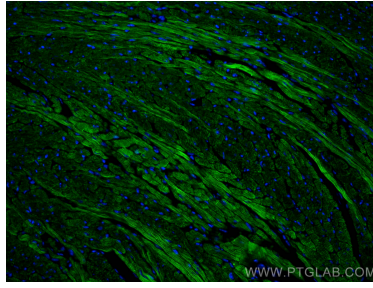
W: [ptgcn.com](http://ptgcn.com)

This product is exclusively available under Proteintech Group brand and is not available to purchase from any other manufacturer.

## Selected Validation Data



Immunofluorescent analysis of (-20°C Ethanol) fixed H9C2 cells using CoraLite® Plus 488 ACTN2 antibody (CL488-14221) at dilution of 1:200.



Immunofluorescent analysis of (4% PFA) fixed paraffin-embedded mouse heart tissue using CoraLite® Plus 488 ACTN2 antibody (CL488-14221) at dilution of 1:200. Heat mediated antigen retrieval with Tris-EDTA buffer (pH 9.0).