

For Research Use Only

# CoraLite® Plus 488-conjugated SPAG5 Polyclonal antibody



Catalog Number: CL488-14726

Featured Product

## Basic Information

Catalog Number:

CL488-14726

Size:

1000 µg/ml

Source:

Rabbit

Isotype:

IgG

Immunogen Catalog Number:

AG6485

GenBank Accession Number:

BC000322

GeneID (NCBI):

10615

UNIPROT ID:

Q96R06

Full Name:

sperm associated antigen 5

Calculated MW:

134 kDa

Observed MW:

135 kDa, 150 kDa

Purification Method:

Antigen affinity purification

Recommended Dilutions:

IF/ICC 1:50-1:500

Excitation/Emission maxima wavelengths:

493 nm / 522 nm

## Applications

Tested Applications:

IF/ICC, FC (Intra)

Species Specificity:

human, mouse

Positive Controls:

IF/ICC : HeLa cells,

## Background Information

SPAG5, also named as MAP126, Astrin and Deepest, is necessary for normal spindle formation during mitosis. It is highly expressed in testis. SPAG5 has different localization in somatic versus male germ cells suggesting the possibility of different function. This antibody is specific to SPAG5.

## Storage

Storage:

Store at -20°C. Avoid exposure to light.

Storage Buffer:

PBS with 50% Glycerol, 0.05% Proclin300, 0.5% BSA, pH 7.3.

Aliquoting is unnecessary for -20°C storage

For technical support and original validation data for this product please contact:

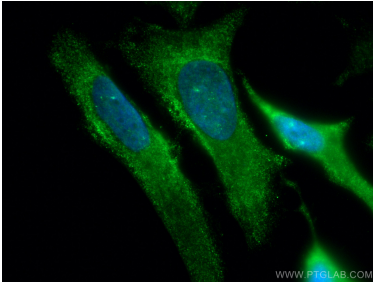
T: 4006900926

E: [Proteintech-CN@ptglab.com](mailto:Proteintech-CN@ptglab.com)

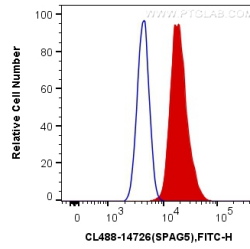
W: [ptgcn.com](http://ptgcn.com)

This product is exclusively available under Proteintech Group brand and is not available to purchase from any other manufacturer.

## Selected Validation Data



Immunofluorescent analysis of (-20°C Methanol) fixed HeLa cells using CoraLite® Plus 488 SPAG5 antibody (CL488-14726) at dilution of 1:200.



1X10<sup>6</sup> HeLa cells were intracellularly stained with 0.4 ug CoraLite® Plus 488 Anti-Human SPAG5 (CL488-14726) (red), or 0.4 ug Control Antibody. Cells were fixed with 4% PFA and permeabilized with Flow Cytometry Perm Buffer (PF00011-C).