

For Research Use Only

# CoraLite® Plus 488-conjugated UQCRC2 Polyclonal antibody



Catalog Number: CL488-14742

Featured Product

## Basic Information

Catalog Number:

CL488-14742

Size:

1000 µg/ml

Source:

Rabbit

Isotype:

IgG

Immunogen Catalog Number:

AG6432

GenBank Accession Number:

BC000484

GeneID (NCBI):

7385

UNIPROT ID:

P22695

Full Name:

ubiquinol-cytochrome c reductase core protein II

Calculated MW:

48 kDa

Observed MW:

48 kDa

Purification Method:

Antigen affinity purification

Recommended Dilutions:

IF 1:50-1:500

Excitation/Emission maxima wavelengths:

493 nm / 522 nm

## Applications

Tested Applications:

FC (Intra), IF/ICC

Species Specificity:

human, mouse, rat

Positive Controls:

IF : HepG2 cells,

## Background Information

UQCRC2 (Ubiquinol-cytochrome-c reductase complex core protein 2) is also named as complex III subunit 2, core protein II and belongs to the UQCRC2/QCR2 subfamily. The bc1 complex contains 11 subunits: 3 respiratory subunits (cytochrome b, cytochrome c1 and Rieske/UQCRFS1), 2 core proteins (UQCRC1/QCR1 and UQCRC2/QCR2) and 6 low-molecular weight proteins (UQCRH/QCR6, UQCRB/QCR7, UQCRCQ/QCR8, UQCR10/QCR9, UQCR11/QCR10 and a cleavage product of Rieske/UQCRFS1) and is part of the mitochondrial respiratory chain. This protein distributes in mitochondrion inner membrane, peripheral membrane protein and matrix side.

## Storage

Storage:

Store at -20°C. Avoid exposure to light. Stable for one year after shipment.

Storage Buffer:

PBS with 50% Glycerol, 0.05% Proclin300, 0.5% BSA, pH 7.3.

Aliquoting is unnecessary for -20°C storage

For technical support and original validation data for this product please contact:

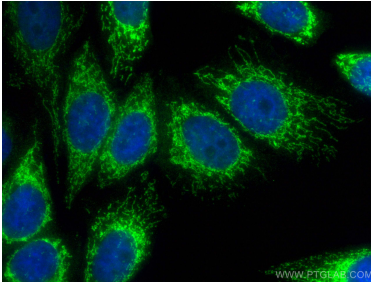
T: 4006900926

E: [Proteintech-CN@ptglab.com](mailto:Proteintech-CN@ptglab.com)

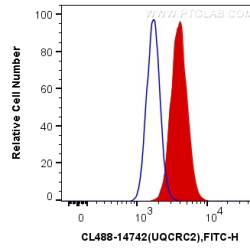
W: [ptgcn.com](http://ptgcn.com)

This product is exclusively available under Proteintech Group brand and is not available to purchase from any other manufacturer.

## Selected Validation Data



Immunofluorescent analysis of (4% PFA) fixed HepG2 cells using CoraLite® Plus 488 UQCRC2 antibody (CL488-14742) at dilution of 1:100.



1X10<sup>6</sup> HepG2 cells were intracellularly stained with 0.4 ug CoraLite® Plus 488 Anti-Human UQCRC2 (CL488-14742) (red), or 0.4 ug Control Antibody. Cells were fixed with 4% PFA and permeabilized with Flow Cytometry Perm Buffer (PF00011-C).