

For Research Use Only

# CoraLite® Plus 488-conjugated AZI2/NAP1 Polyclonal antibody



Catalog Number: CL488-15042

## Basic Information

|  |  |   |
|--|--|---|
| <b>Catalog Number:</b><br>CL488-15042      | <b>GenBank Accession Number:</b><br>BC001139 | <b>Purification Method:</b><br>Antigen affinity purification      |
| <b>Size:</b><br>1000 µg/ml                 | <b>GeneID (NCBI):</b><br>64343               | <b>Recommended Dilutions:</b><br>IF/ICC 1:50-1:500                |
| <b>Source:</b><br>Rabbit                   | <b>UNIPROT ID:</b><br>Q9H6S1                 | <b>Excitation/Emission maxima wavelengths:</b><br>493 nm / 522 nm |
| <b>Isotype:</b><br>IgG                     | <b>Full Name:</b><br>5-azacytidine induced 2 |   |
| <b>Immunogen Catalog Number:</b><br>AG6892 | <b>Calculated MW:</b><br>45 kDa              |   |
|  | <b>Observed MW:</b><br>45 kDa                |   |

## Applications

|                                       |  |
|---------------------------------------|--|
| <b>Tested Applications:</b><br>IF/ICC | <b>Positive Controls:</b><br>IF/ICC : HepG2 cells, |
| <b>Species Specificity:</b><br>human  |  |

## Background Information

AZI2, also known as NAP1, is a TNF receptor (TNFR)-associated factor family member-associated NF- $\kappa$ B activator-binding kinase 1-binding protein that regulates the production of IFNs. It is an adapter protein which binds TBK1 and IKKBE playing a role in antiviral innate immunity.

## Storage

**Storage:**  
Store at -20°C. Avoid exposure to light. Stable for one year after shipment.  
**Storage Buffer:**  
PBS with 50% Glycerol, 0.05% Proclin300, 0.5% BSA, pH 7.3.  
Aliquoting is unnecessary for -20°C storage

For technical support and original validation data for this product please contact:

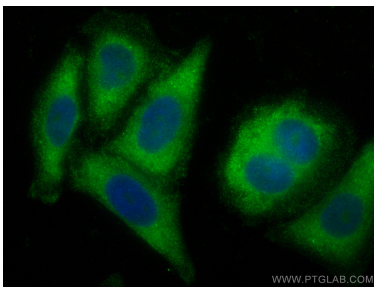
T: 4006900926

E: [Proteintech-CN@ptglab.com](mailto:Proteintech-CN@ptglab.com)

W: [ptgcn.com](http://ptgcn.com)

**This product is exclusively available under Proteintech Group brand and is not available to purchase from any other manufacturer.**

## Selected Validation Data



Immunofluorescent analysis of (-20°C Ethanol)  
fixed HepG2 cells using CoraLite® Plus 488  
AZ12/NAP1 antibody (CL488-15042) at dilution of  
1:200.