

For Research Use Only

CoraLite® Plus 488-conjugated RLBP1 Polyclonal antibody



Catalog Number: **CL488-15356**

Basic Information

Catalog Number: CL488-15356	GenBank Accession Number: BC004199	Purification Method: Antigen affinity purification
Size: 1000 µg/ml	GeneID (NCBI): 6017	Recommended Dilutions: IF 1:50-1:500
Source: Rabbit	UNIPROT ID: P12271	Excitation/Emission maxima wavelengths: 493 nm / 522 nm
Isotype: IgG	Full Name: retinaldehyde binding protein 1	
Immunogen Catalog Number: AG7602	Calculated MW: 36 kDa	
	Observed MW: 36 kDa	

Applications

Tested Applications: IF-P	Positive Controls: IF : mouse eye tissue,
Species Specificity: human, mouse, rat	

Background Information

RLBP1 (Retinaldehyde-binding protein 1) is also named as cellular retinaldehyde-binding protein (CRALBP). CRALBP, a 36-kDa aqueous soluble carrier, is expressed in abundance by both retinal pigment epithelial (RPE) and Muller cells of retina and is important for rod- and cone-driven vision (PMID: 32188692). Retinal RLBP1 expression was decreased in diabetes, and its overexpression in Müller glia mitigated DR-associated neurovascular degeneration (PMID: 33674409).

Storage

Storage:
Store at -20°C. Avoid exposure to light. Stable for one year after shipment.
Storage Buffer:
PBS with 50% Glycerol, 0.05% Proclin300, 0.5% BSA, pH 7.3.
Aliquoting is unnecessary for -20°C storage

For technical support and original validation data for this product please contact:

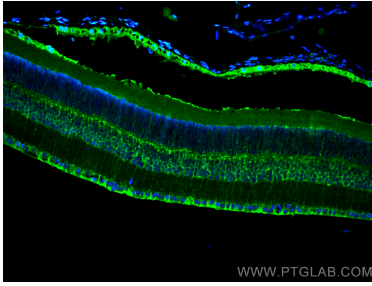
T: 4006900926

E: Proteintech-CN@ptglab.com

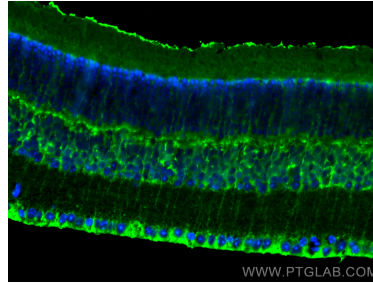
W: ptgcn.com

This product is exclusively available under Proteintech Group brand and is not available to purchase from any other manufacturer.

Selected Validation Data



Immunofluorescent analysis of (4% PFA) fixed paraffin-embedded mouse eye tissue using CoraLite® Plus 488 RLBP1 antibody (CL488-15356) at dilution of 1:200. Heat mediated antigen retrieval with Tris-EDTA buffer (pH 9.0).



Immunofluorescent analysis of (4% PFA) fixed paraffin-embedded mouse eye tissue using CoraLite® Plus 488 RLBP1 antibody (CL488-15356) at dilution of 1:200. Heat mediated antigen retrieval with Tris-EDTA buffer (pH 9.0).