

For Research Use Only

CoraLite® Plus 488-conjugated Glycophorin A Polyclonal antibody



Catalog Number: CL488-15874

Basic Information

Catalog Number: CL488-15874	GenBank Accession Number: BC005319	Purification Method: Antigen affinity purification
Size: 1000 µg/ml	GeneID (NCBI): 2993	Excitation/Emission maxima wavelengths: 493 nm / 522 nm
Source: Rabbit	UNIPROT ID: P02724	
Isotype: IgG	Full Name: glycophorin A (MNS blood group)	
Immunogen Catalog Number: AG8635	Calculated MW: 150 aa, 16 kDa	
	Observed MW: 36-38 kDa	

Applications

Tested Applications:
FC

Species Specificity:
human

Background Information

Glycophorin A (GYPA) is the major transmembrane sialoglycoprotein in erythrocytes. It is a dimeric type I transmembrane protein carrying 15 closely clustered O-linked tetrasaccharides capped with sialic acid/N-acetylneuraminic acid (Neu5Ac). This 36 kDa protein represents the major sialoglycoprotein of the red blood cell membrane displaying about one million copies per cell. (PMID: 9490702)

Storage

Storage:
Store at -20°C. Avoid exposure to light. Stable for one year after shipment.

Storage Buffer:
PBS with 50% Glycerol, 0.05% Proclin300, 0.5% BSA, pH 7.3.

Aliquoting is unnecessary for -20°C storage

For technical support and original validation data for this product please contact:

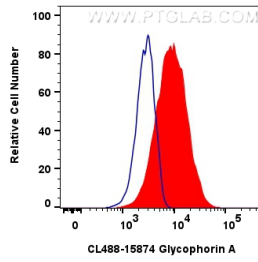
T: 4006900926

E: Proteintech-CN@ptglab.com

W: ptgcn.com

This product is exclusively available under Proteintech Group brand and is not available to purchase from any other manufacturer.

Selected Validation Data



1x10⁶ K-562 cells were intracellularly stained with 0.8 ug CoraLite® Plus 488 Anti-Human Glycophorin A (CL488-15874) (red), or 0.8 ug CoraLite® Plus 488-conjugated Rabbit IgG control Rabbit PolyAb (CL488-30000) (blue). Cells were not fixed.