

For Research Use Only

CoraLite® Plus 488-conjugated CHMP7 Polyclonal antibody

Catalog Number: CL488-16424

Featured Product



Basic Information

Catalog Number:

CL488-16424

Size:

1000 ug/ml

Source:

Rabbit

Isotype:

IgG

Immunogen Catalog Number:

AG9625

GenBank Accession Number:

BC019110

GeneID (NCBI):

91782

UNIPROT ID:

Q8WUX9

Full Name:

CHMP family, member 7

Calculated MW:

453 aa, 51 kDa

Observed MW:

51-55 kDa

Purification Method:

Antigen affinity purification

Recommended Dilutions:

IF/ICC 1:50-1:500

Excitation/Emission maxima
wavelengths:

493 nm / 522 nm

Applications

Tested Applications:

IF/ICC

Species Specificity:

human

Positive Controls:

IF/ICC : A431 cells,

Background Information

CHMP7 (Charged multivesicular body protein 7), it is expected to be located in the nucleus and cytoplasm, which is ubiquitinated in lymph node and appendix. It is reported that Lem2p (LEM2), a member of the LEM (Lap2- Emerin- Man1) family of inner nuclear membrane proteins, and the ESCRT-II/ESCRT-III hybrid protein Cmp7p (CHMP7), work together to recruit additional ESCRT-III proteins to holes in the nuclear membrane. CHMP7 protein is involved in several processes, including late endosome to vacuole transport; midbody abscission; and mitotic nuclear division. It is a part of ESCRT III complex, which colocalizes with chromatin. The molecular weight of CHMP7 is 50 kDa.

Storage

Storage:

Store at -20°C. Avoid exposure to light. Stable for one year after shipment.

Storage Buffer:

PBS with 50% Glycerol, 0.05% Proclin300, 0.5% BSA, pH 7.3.

Aliquoting is unnecessary for -20°C storage

For technical support and original validation data for this product please contact:

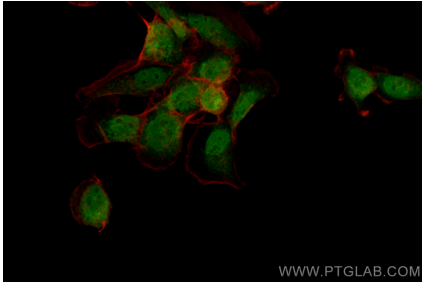
T: 4006900926

E: Proteintech-CN@ptglab.com

W: ptgcn.com

This product is exclusively available under Proteintech Group brand and is not available to purchase from any other manufacturer.

Selected Validation Data



Immunofluorescent analysis of (4% PFA) fixed A431 cells using CoraLite® Plus 488 CHMP7 antibody (CL488-16424) at dilution of 1:200.