

For Research Use Only

CoraLite® Plus 488-conjugated RTF2 Polyclonal antibody



Catalog Number: CL488-16633

Featured Product

Basic Information

Catalog Number:

CL488-16633

Size:

1000 µg/ml

Source:

Rabbit

Isotype:

IgG

Immunogen Catalog Number:

AG9972

GenBank Accession Number:

BC003359

GeneID (NCBI):

51507

UNIPROT ID:

Q9BY42

Full Name:

chromosome 20 open reading frame

43

Calculated MW:

34 kDa

Observed MW:

35-40 kDa

Purification Method:

Antigen affinity purification

Recommended Dilutions:

IF/ICC 1:50-1:500

Excitation/Emission maxima

wavelengths:

493 nm / 522 nm

Applications

Tested Applications:

IF/ICC

Species Specificity:

human, mouse, rat

Positive Controls:

IF/ICC : HeLa cells,

Background Information

The function of C20orf43 remains largely unknown. Catalog#16633-1-AP is a rabbit polyclonal antibody raised against the full-length of human C20orf43. The MW of this protein is 40 kDa, and this antibody specially recognises the 40 kDa protein.

Storage

Storage:

Store at -20°C. Avoid exposure to light. Stable for one year after shipment.

Storage Buffer:

PBS with 50% Glycerol, 0.05% Proclin300, 0.5% BSA, pH 7.3.

Aliquoting is unnecessary for -20°C storage

For technical support and original validation data for this product please contact:

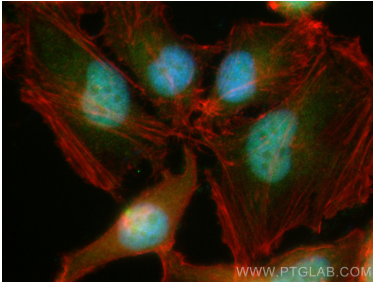
T: 4006900926

E: Proteintech-CN@ptglab.com

W: ptgcn.com

This product is exclusively available under Proteintech Group brand and is not available to purchase from any other manufacturer.

Selected Validation Data



Immunofluorescent analysis of (4% PFA) fixed HeLa cells using CoraLite® Plus 488 RTF2 antibody (CL488-16633) at dilution of 1:200, CL594-Phalloidin (red).